

July 25, 2018

Mr. Michael Gelin, PE, CME, CPWM
Municipal Engineer, Woodbridge Township
1 Main Street
Woodbridge, New Jersey 07095

RE: Deliverable – Planting Plan for Blue Acres Properties within the Colonia Neighborhood

Dear Mr. Gelin:

Rutgers Cooperative Extension (RCE) is pleased to provide you with this planting plan for three former residential properties in Colonia that Woodbridge Township acquired through the NJ Blue Acres Program. The ~0.5-acre project area consists of three former residential lots; two lots are located near the corner of Northhill Road and Long Hill Road, and the third lot is located on Brookside Court. The objective of this plan is to increase both the aesthetic and conservation value of the newly acquired open space, while reducing maintenance requirements.

We have also included cost estimates for the plant materials. In the past, the Township has had landscape trees within Blue Acres areas installed by an outside contractor. Therefore, the cost estimates for trees include installation. The seed mix cost does not include installation because seeding has typically been conducted by the Township in the past. As always, RCE is happy to facilitate partnerships with multiple groups to increase the cost-effectiveness of Woodbridge Township's restoration implementation efforts.

COLONIA PLANTING PLAN – COST ESTIMATES FOR MATERIALS

Item	Quantity	Unit Cost	Total
native landscape trees (including installation)	25 trees	\$350 ea.	\$8,750
no-mow turf seed mix	100 lbs	\$5/lb	\$500
corrugated plastic tree guard (32")	1 bundle	\$56/bundle	\$56
irrigation bag	25	\$23 ea	\$575
		TOTAL	\$9,881

Please feel free to reach out to us with any questions regarding this plan.

Sincerely,



Brooke Maslo, Ph.D.

cc: Caroline Ehrlich
Thomas Flynn
Dennis Henry
George Brew
Jeremiah Bergstrom

COLONIA

OPEN SPACE AND FLOODPLAIN RESTORATION PLAN

WOODBIDGE TOWNSHIP

MIDDLESEX COUNTY, NEW JERSEY

PROJECT DESCRIPTION:

PROPOSED NATIVE TREE AND SHRUB PLANTINGS IN COLONIA, WOODBRIDGE TOWNSHIP, NEW JERSEY AS PART OF THE OPEN SPACE AND FLOODPLAIN RESTORATION PLAN

LIST OF DRAWINGS:

SHEET NAME	TITLE
COVER	COVER SHEET
P-1	SITE PLAN 1
P-2	SITE PLAN 2
DT-1	DETAILS

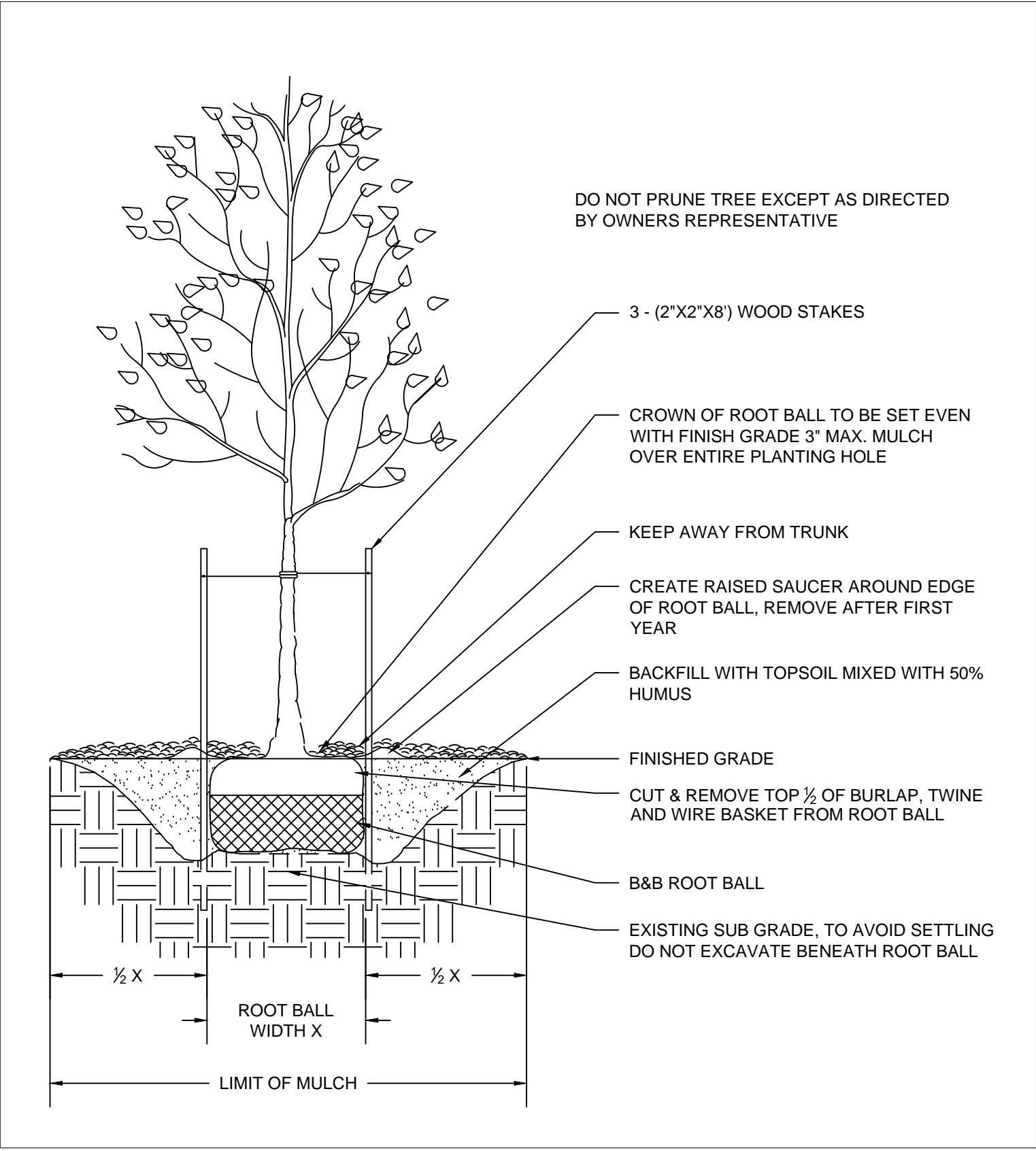
GENERAL NOTES:

1. SURVEY CONDUCTED BY RUTGERS COOPERATIVE EXTENSION WATER RESOURCES PROGRAM. (OR ELEVATION DATA OBTAINED FROM [INSERT DATA SOURCE HERE, TYP NOAA DIGITAL COASTAL LIDAR].)
2. ANY OVERHEAD AND UNDERGROUND UTILITIES SHOWN ARE FROM FIELD OBSERVATIONS AND ARE NOT A COMPLETE REPRESENTATION. A UTILITY MARKOUT NEEDS TO BE CONDUCTED PRIOR TO MOBILIZATION. NJ ONE CALL: 811 OR 800-272-1000

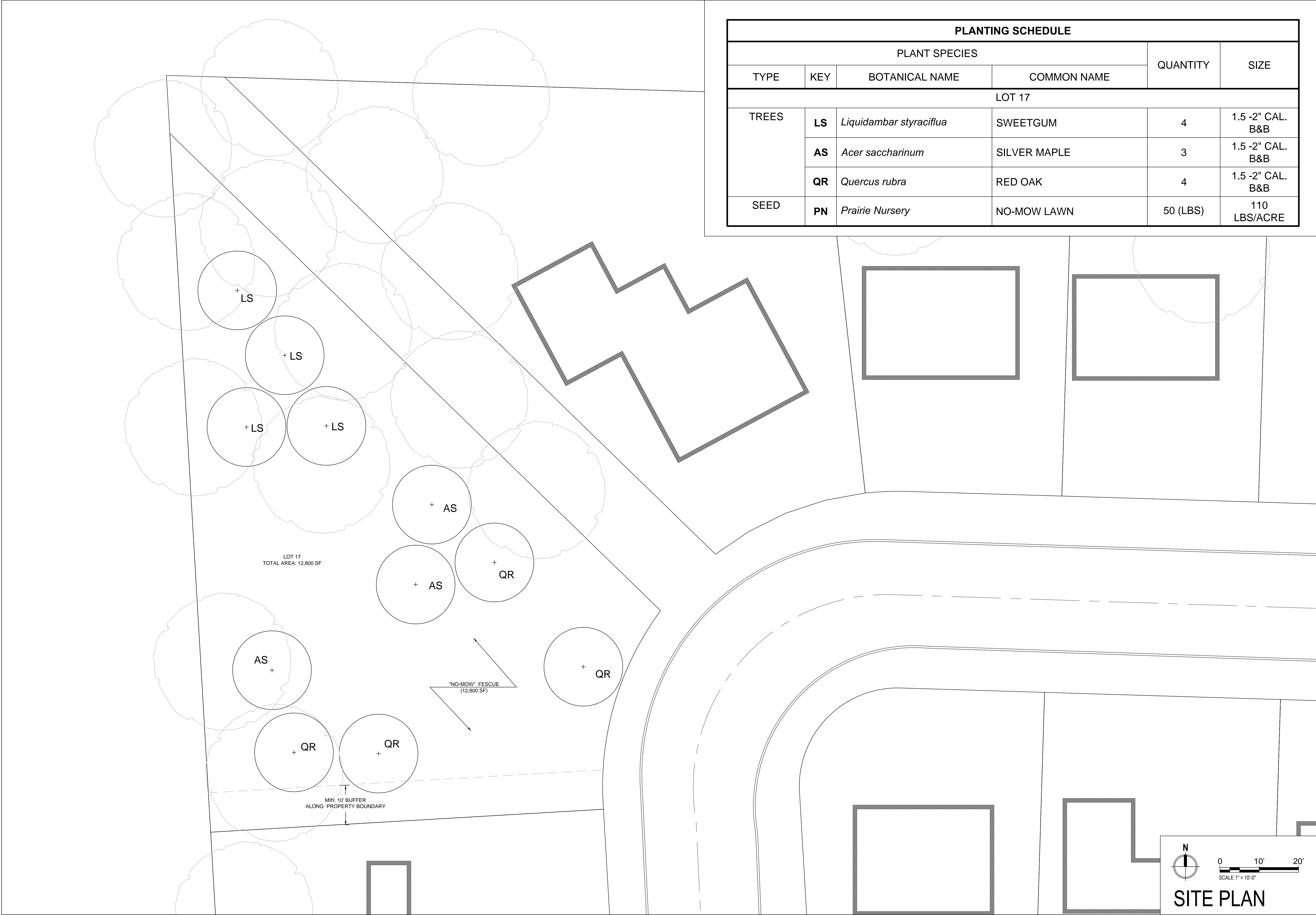
LOCATION MAP:



DETAILS:



- NOTES:
1. DO NOT DAMAGE MAIN ROOTS OR ROOT BALL WHEN INSTALLING TREE STAKE.
2. WATER THOROUGHLY AFTER INSTALLATION.
3. REMOVE SAUCER AND STAKES TWO YEARS OR LESS AFTER INSTALLATION.
4. CONTRACTOR IS NOT TO USE TREE WRAP.
5. VACANT LOTS TO BE SEEDED WITH LOFT/PENNINGTON "SUMMER STRESS MIX 2"
6. SEED AT 100-200 LBS. PER ACRE.



PLANTING SCHEDULE					
PLANT SPECIES				QUANTITY	SIZE
TYPE	KEY	BOTANICAL NAME	COMMON NAME		
LOT 17					
TREES	LS	<i>Liquidambar styraciflua</i>	SWEETGUM	4	1.5 -2" CAL. B&B
	AS	<i>Acer saccharinum</i>	SILVER MAPLE	3	1.5 -2" CAL. B&B
	QR	<i>Quercus rubra</i>	RED OAK	4	1.5 -2" CAL. B&B
SEED	PN	<i>Prairie Nursery</i>	NO-MOW LAWN	50 (LBS)	110 LBS/ACRE

REVISIONS

No.	DATE	DESCRIPTION

JEREMIAH BERGSTROM, LLA

LICENSED LANDSCAPE ARCHITECT

NJ LICENSE # 21A500090700

DRAWN

CHECKED

APPROVED

DATE

MH

JB

BM

07/25/2018

COLONIA

OPEN SPACE AND FLOODPLAIN RESTORATION PLAN

WOODBIDGETTOWNSHIP

MIDDLESEX COUNTY, NJ

PROPOSED SITE PLAN

RUTGERS

New Jersey Agricultural Experiment Station

SHEET NAME

P-2

