

4th Five-Year Community Forestry Management Plan 2018-2022



BOROUGH of MADISON, MORRIS COUNTY NEW JERSEY

Hartley Dodge Memorial Building
50 Kings Road, Madison, New Jersey 07940

Telephone: (973) 593-3042

- **Robert H. Conley** (Mayor)

Carmela Vitale (Council President)
Ben Wolkowitz (Councilperson)
Bob Landrigan (Councilperson)

Astri Baillie (Councilperson)
Patrick Rowe (Councilperson)
Maureen Byrne (Councilperson)

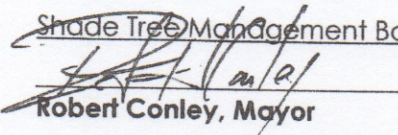
Prepared By:

Shade Tree Management Board and Richard Wolowicz, LTE/CTE # 281, RichView Consulting

Submitted on: November 2017

Borough of Madison 4th Five Year CFMP

1. MUNICIPAL INFORMATION FORM

Municipality: Borough of Madison
 County: Morris County
 Address: 50 Kings Road, Madison, NJ 07940
 Contact Name and Title: Gene Cracovia & Nancy Bruce, Members Shade Tree Management Board
 Phone: 973-593-3088
 Email: Genecracovia@msn.com
Nancybbuce@gmail.com
 Organization's Name: Shade Tree Management Board
 Mayor's Signature: 
Robert Conley, Mayor
 Date of Management Plan Submission: November 2017
 Time Period Covered in Management Plan: 2018 through 2022

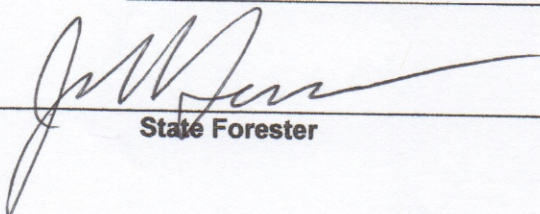
Please check off the Community Stewardship Incentive Program (CSIP) practices identified in your management plan.

- ✓ CSIP #1 Training
- ✓ CSIP #2 Community Forestry Ordinance Establishment
- ✓ CSIP #3 Public Education and Awareness
- ✓ CSIP #4 Arbor Day Activities
- ✓ CSIP #5 Tree Inventory
- ✓ CSIP #6 Tree Hazard Assessment
- ✓ CSIP #7 Storm Damage Assessment
- ✓ CSIP #8 Tree Maintenance
- ✓ CSIP #9 Insect and Disease Management
- ✓ CSIP #10 Wildfire Protection
- ✓ CSIP #11 Tree Planting
- ✓ CSIP #12 Tree Recycling
- ✓ CSIP #13 Sidewalk Maintenance Program
- ✓ CSIP #14 Storm Water Management
- ✓ CSIP #15 Sustainable NJ

Official Use Only Certification

The above-named community has made formal application to the New Jersey Forest Service. I am pleased to advise you that after our review, the NJ Forest Service has concluded that this plan meets the standards set forth by the State and NJ Community Forestry Council and is approved for the period covered.

Signed



State Forester

12/14/17
 Approved date

Borough of Madison: 4th Five-Year Community Forestry Management Plan 2018-2022



2. INTRODUCTION

The following sections outline programs and procedures for managing public shade tree resources within the Borough of Madison during the period of 2018-2022.

Recognizing that trees help improve the quality of urban and suburban life, the Borough has developed this Community Forestry Management Plan in accordance with statewide efforts to preserve and promote sustainable community forest resources and the Goals and Objectives of Madison's Master Plan.

This fourth five-year plan, focuses primarily on public safety as it involves Borough owned street trees as well as trees on other public properties and working with the municipal tree inventory. It also focuses on dealing with the current emerging insect epidemics, e.g. the Emerald ash borer.

Mission Statement

To proactively develop and promote a sustainable community forest and shade tree resource for the Borough of Madison and its residents' physical health and economic, environmental and social well-being.

Goals and Objectives

For this Fourth Community Forestry Management Plan, the following goals have been established.

Borough of Madison 4th Five Year CFMP

Goal 1: Storm Damage Assessment (CSIP # 7 Storm Damage Assessment)

- A) Continue windshield surveys after major storms.

Goal 2: Tree Maintenance and Removals (CSIP # 8 Tree Maintenance)

- A) Continue young tree pruning program
- B) Continue to use inventory/windshield surveys to establish pruning schedule
- C) Use weed whacker guards on newly planted trees.
- D) Enforce tree protection during construction

Goal 3: Insect and Disease Management (CSIP # 9 Insect and Disease Management)

- A) Implement Ash Tree Management Program
- B) Educate the public on Emerald ash borer (press releases, website postings, and at Arbor Day, Bottle Hill Day, Green Fair)
- C) Begin program of take downs for ash trees rated 'poor' condition from inventory.
- D) Assess ash trees planted in multiples (i.e. Noe Avenue)
- E) Continue subscribing and disseminating Master Gardener's national tree information quarterly newsletters.
- F) Continue attending CEU classes on tree pests/disease.

Goal 4: Wildfire Protection (CSIP # 10 Wildfire Protection)

- A) Continue to monitor brush in parks.

Goal 5: Tree Planting (CSIP # 11 Tree Planting)

- A) Continue to use inventory data for tree diversity planting and documenting new tree success rate.
- B) Continue tree planting program with partners.
- C) Get Department of Public Works feedback after spring planting.

Goal 6: Tree Recycling (CSIP # 12 Tree Recycling)

- A) Educate residents on composting.
- B) Team up with Garden Club, Environmental Commission and schools to disseminate recycling information.

Goal 7: Sidewalk Maintenance (CSIP # 13 Sidewalk Maintenance Program)

- A) Perform a trial sidewalk repair using new products.

Goal 8: Storm Water Management (CSIP # 14 Storm Water Management)

- A) Team up with Garden Club of Madison, Environmental Commission and other groups to extend use of rain gardens.
- B) Continue reforestation efforts.

Goal 9: Sustainable New Jersey (CSIP # 15 Sustainable NJ)

- A) Update tree canopy assessment.

Goal 10: Celebrate Arbor Day (CSIP # 4 Arbor Day)

- A) Continue annual Arbor Day Celebrations
- B) Re-certify Tree City USA annually
- C) Continue to apply for Tree City USA Growth Award

Borough of Madison 4th Five Year CFMP

Goal 11: Community Forestry Ordinance (CSIP # 2 Establish Community Forestry Ordinance)

- A) Review ordinance to check on its accuracy and application.

Goal 12: Develop an Arboretum Master Plan (CSIP # 3 Public Education and Awareness)

- A) Enlist the help of STMB Partners (i.e. Friends of Madison Shade Tree, Inc. Environmental Commission, the Parks Advisory Committee and the Garden Club of Madison).
- B) Break plan into phases to aid in its implementation.

Liability Statement

As with all municipal assets, trees require maintenance and it is inevitable that potentially hazardous conditions will emerge.

Nevertheless, it is widely recognized that comprehensive and proactive community forestry programs designed to prevent, anticipate and correct such problems will cost-effectively maximize the benefits of trees while minimizing the threat to public safety and exposure to liability. All elements of this plan are designed to optimize the balance between tree benefits and risks.

The Borough of Madison acknowledges that not all hazardous conditions can or will be predicted. It must work with limited resources spread over a large physical expanse and may not be able to meet every need immediately.

The intent of this plan is to direct available resources toward the greatest needs and systematically develop and maintain a healthy shade tree resource with a commensurate reduction in threats to public safety.

Public safety will be a primary consideration in the development and implementation of all shade tree plans and programs. This plan provides a means of identifying and systematically addressing existing tree hazards. Further, it provides a means of reducing the potential for future hazards and liability through responsible planting and preventative maintenance.

3. Community Overview – Five Years of Progress

In its 3rd Community Forestry Management Plan, the Borough of Madison's Shade Tree Management Board had set the following goals broken down into 5 main categories. They include:

1. Public Safety
 - a. Storm response (CSIP # 7 Storm Damage Assessment)
 - b. Sidewalks (CSIP # 13 Sidewalk Maintenance Program)
2. Inventory Update (CSIP # 5 Tree Inventory)
 - a. Street trees
 - b. Parks
3. Reforestation (CSIP # 11 Tree Planting)
 - a. Streets

Borough of Madison 4th Five Year CFMP

- b. Parks
4. Enforcement/education of land use regulations regarding tree protection (CSIP # 3 *Public Education and Awareness*)
 - a. Cross reference Management Plan with the Borough's Master Plan
 - b. Work more closely with Zoning Board of Adjustments;
give monthly reports to STMB Council Liaison to report to Mayor/Council.
5. Education/incentive for residents to plant private trees (CSIP # 3 *Public Education and Awareness and CSIP # 11 Tree Planting*)

The STMB did set up an aggressive list of goals with many action steps. The list of goals and their status is found below.

Goals

- All new STMB members to have CORE Training
Status: All but our newest member has received CORE Training
- Council Liaison and/or other Council member / Mayor to have CORE training
Status: Efforts have been made, but due to conflicting schedules, CORE Training hasn't been taken yet.
- STMB members, Borough employees to continue CEU training to meet or exceed standard of at least 2 members totaling 8 hrs. per year
Status: Goal has been met.
- Ensure Electric Department foreman has training in working with trees
Status: has been partially met. Line Clearance contractors are trained and do most of the work in the Borough. The Borough employees still need to be trained.
- Each spring, STMB to go over planting specs with the Department of Public Works tree planting foreman
Status: Goal has been achieved.
- Get speakers for specific issues e.g. tree pests
Status: Goal has been met with a winter 2017 Emerald ash borer seminar which was advertised and open to the public.
- STMB member(s) to receive technical training in sidewalk conflicts and to keep current on tree pest / identification
Status: Goal has been met with any additional information on this topic being passed along to the Department of Public Works.
- Update STMB handbook to train any new members, liaisons. Include responsibilities, procedures, function of distinct roles on the board.
Status: Goal has been achieved. All new members are given a copy of the CFMP, a list of current members and liaisons. A listing of job and responsibilities of STMB members was developed.
- Arrange for Hazardous Tree training in Madison for STMB, FMST, Parks, Department of Public Works and interested personnel/volunteers.
Status: Goal has been achieved.

Borough of Madison 4th Five Year CFMP

- Assess, on a regular basis, the borough's need and /or residents' support for a private tree ordinance.
Status: Goal has been met.
- Annually review any addendums to Land Use chapter in Master Plan.
Status: Goal has been met.
- Improve tree protection enforcement during construction.
Status: Goal has been met by ongoing continuous efforts to promote tree protection on construction sites.
- Link Master Plan to CFMP.
Status: Goal is in progress as communication has been established to include the STMB's efforts to promote tree health and preservation. This will be done when the Master Plan is updated.
- Link Storm Water Management Plan to CFMP.
Status: Goal has been met.
- Link Environmental Resource Plan to CFMP.
Status: Goal is in progress as communication has been established to include the CFMP in the Borough's Environmental Resource Plan when it is updated.
- Continue to submit press releases to paper in print and online Borough's website for tree events, projects, and special concerns (storm damage).
Status: Goal has been met.
- Provide list of invasive plants on Website.
Status: Goal has been met. Listing is on STMB Rosenet webpage.
- Update Landmark Tree list.
Status: Goal has been met.
- Walking tour – MRC natural forest.
Status: Goal has been met. In 2016 a walking tour was done to check on tree seedlings planted 2 years prior. In 2014, a walk-through Drew woods with Professor Sara Webb was conducted in collaboration with the Garden Club of Madison.
- Ask residents and businesses to "adopt a street tree" (i.e. take care of tree in front of/near their house/ place of business).
Status: Goal has been met. An updated information pack was given to residents when street trees are planted.
- Prepare information packet for realtors, garden centers.
Status: Goal has not been met.
- Distributed trees at Bottle Hill Day to encourage private tree planting.
Status: Goal has been met. Trees from Borough tree nursery were given out at Arbor Day and Bottle Hill Day. The public was invited to come to the tree nursery on a dedicated day to 'adopt' trees. Approximately 40-50 trees were given away.

Borough of Madison 4th Five Year CFMP

- Continue programs for Tree City USA status and Tree City Growth Awards.
Status: Goal has been met. In 2017, the Borough of Madison was named a Sterling Tree City USA for Ten Years of Growth Awards from the Arbor Day Foundation
- Plant a dedicated Arbor Day tree each year.
Status: Goal has been met.
- Rotate an Arbor Day tree planting at each school through town.
Status: Goal has been partially met since it is ongoing.
- Continue to update current tree inventory; update using new or old inventory tool.
Status: Goal has been met.
- Re-assess current inventory program with ArborPro – including having ArborPro give presentation about ways to update.
Status: Goal has been met. The STMB has continuous reassessment of the tree inventory and has researched new products hosted by Arbor Pro.
- Research use of i-Tree.
Status: Goal has been met.
- Determine what tree inventory tool to use in future years
Status: Goal has been met. The STMB has been researching which inventory tool/product to use. In 2017, after information webinar, a decision was made to update the Arbor Pro system.
- Sample one park every other year.
Status: Goal has been met.
- Work with borough employee to take more active role in up keeping inventory program.
Status: Goal has been partially met. With new staffing, the STMB will work with the new employees once the updated Arbor Pro system is in place.
- Link Sustainable NJ tree canopy cover goal to tree inventory.
Status: Goal is in progress. The STMB worked with Drew University to identify current tree canopy number for the Borough. Using the Inventory, STMB will continue to manage the public tree portion of the Borough's canopy.
- Use inventory to keep track of trees that are identified as declining for potential hazards.
Status: Goal has been met.
- Document how to do a detail windshield survey, what and where to look etc.
Status: Goal has been met.
- Continue 2 windshield surveys by quadrant per year.
Status: Goal has been met.
- Continue to do windshield surveys after storm for hangers, leaners and other hazardous conditions.
Status: Goal has been met.

Borough of Madison 4th Five Year CFMP

- Develop storm plan. Implement plan to walk main streets after major storms.
Status: Goal has been partially met. The Department of Public Works is aware that the STMB members are willing to patrol streets after storm occurrence.
- Link STMB to Office of Emergency Preparedness.
Status: Goal has been partially met. The STMB has requested to be included in future plans and to assist in storm aftermath.
- Enhance borough emergency alert process to include STMB when appropriate
Status: Goal has been met.
- Use inventory to establish pruning program.
Status: Goal has been met.
- Continue young tree pruning program.
Status: Goal has been met.
- Use weed-whacking preventative guards where needed.
Status: Goal has been met.
- Work with Land Use to enforce tree protection during construction.
Status: Goal has been met. A spreadsheet was developed to keep track of violations.
- Subscribe to Master Gardeners national tree information quarterly alerts.
Status: Goal has been met.
- Continue CEU classes on tree pests/disease.
Status: Goal has been met. Rutgers Tree Day Seminars, NJ Shade Tree Federation Meetings were the main sources of CEUs
- Continue to monitor brush in parks and public open spaces (2013-2017)
Status: Goal has been met.
- Meet with fire officials to review Wildfire Plan
Status: Goal has been met. Meeting was held with the Fire Chief who believes that given the nature of the Borough, no additional Wildfire Plan is necessary. However, monitoring brush levels in parks and buffering areas is being done to track the amount of biomass that is accumulating.
- Using inventory, continue with tree diversity planting and document newly planted trees success rate.
Status: Goal has been met.
- Continue Tree Planting Program with partners.
Status: Goal has been met. Seedlings were planted in the Madison Recreation Complex and tree seedlings were given away with Drew University.
- Continue to research trees to plant under wires.
Status: Goal has been met.

Borough of Madison 4th Five Year CFMP

- Get Department of Public Works feedback after spring tree planting.
Status: Goal has been met.
- Each spring, put on STMB website what trees were planted and location.
Status: Goal has been met.
- Develop a detailed written and drawn tree planting specification to be included in all bid packages when project goes out to bid. Research guidelines set forth by NJ Forestry Council associated with the CSIP program. Include use of tree root guard device, if applicable.
Status: Goal has been met.
- Develop a specification for tree procurement including tagging trees in field, health of plants, and refusal of plant material on day of delivery due to damage or presence of insects, disease, girdling roots, or absence of root collar.
Status: Goal has been met.
- Explore alternative planting site markings methodologies.
Status: Goal has been met.
- Use "Tree Giveaway" at Bottle Hill Day to encourage private tree planting.
Status: Goal has been met. Public was invited to the Tree Nursery on Bottle Hill Day to 'adopt' trees. Approximately 40-50 trees were 'adopted.'
- Educate public on composting. Team with Garden Club, Environmental Commission and schools
Status: Goal has not been met.
- Assess and propose improvement to borough recycling program for leaves, lawn clippings and tree material.
Status: Goal has been met, but Department of Public Works was not interested due to potential neighborhood complaints where this program would be located.
- Develop root cutting / sidewalk repair guidelines.
Status: Goal has been met. The STMB identified what should be done for the sidewalks lifted by the zelkovas at Borough Hall. This will be used as a basis to develop generic guidelines.
- Research different products that help ease sidewalk / tree conflicts
Status: Goal has been met. Information on rubber mats under sidewalks from a seminar was discussed with Department of Public Works.
- Trial sidewalk repair using new products.
Status: Goal has been partially met. Information was provided to Department of Public Works and they declined the opportunity to try. Ongoing discussion is continuing.
- Educate residents about responsibilities of sidewalk upkeep/repair.
Status: Goal has been met. Information is posted on Borough Website. A link was established from STMB website to Borough's website.

- Continue reforestation efforts.
Status: Goal has been met. New seedlings and trees were planted in MRC and a red oak was planted in the new Arboretum. Additionally, tree seedlings were given away at schools, trees were planted at the Community Garden to act as a wind shield, Chestnut trees were planted in a park and annual street tree plantings have occurred.
- Team up with Garden Club and the Environmental Commission to extend the use of rain gardens throughout the borough. (CSIP # 14 Storm Water Management)
Status: Goal has been met. Plantings occurred at a rain garden site near the community garden.
- Establish municipal tree nursery.
Status: Goal has been met, with the nursery being established in 2013.

As seen by the results, most of the STMB's goals have been met. Some have been partially met. As active as the Board is, there were a few problems encountered during this Management Plan. Most of those problems were solved by meeting and discussing the differences of opinion in priorities with different agencies and departments in and outside of the municipal government structure. All in all, this open communication has helped to position the STMB and the Borough on the same path to promote a healthy tree canopy for the Borough.

4. Community Forestry Program Administration

The Shade Tree Management Board is responsible for the management of the Borough's public shade tree resources, administering Madison's Shade Tree Management Program and providing guidance to the Director of Public Works on the care of the Borough's trees and shrubbery on streets, highways and public places.

It is anticipated that changes to the Shade Tree Management Board will occur in January. The new members will be listed on the Borough's website, www.Rosenet.org.

The current members of the Shade Tree Management Board are

Eugene Cracovia, Chair
Nancy Bruce, Vice Chair
Penny Garman
Alice Wade
Tom Salaki
Vince Licari
Stephen Miller
Brian Monaghan, Alternate #1
Alan Andreas, Alternate #2
Carmela Vitale, Council liaison

Program Responsibilities

Mayor & Council

- The Mayor is responsible, with the advice and consent of the Borough Council, for appointing members to the Shade Tree Management Board and other Borough boards and commissions.
- The Borough Council has ultimate authority over the policies, procedures and programs of the Shade Tree Program and approves the STMB budget.
- In addition to his or her regular duties, each Council member is responsible for:
 - Chairing a Standing Committee that oversees the Borough's various departments and offices.
 - Serving as a Council Liaison to various Borough commissions, boards and committees.

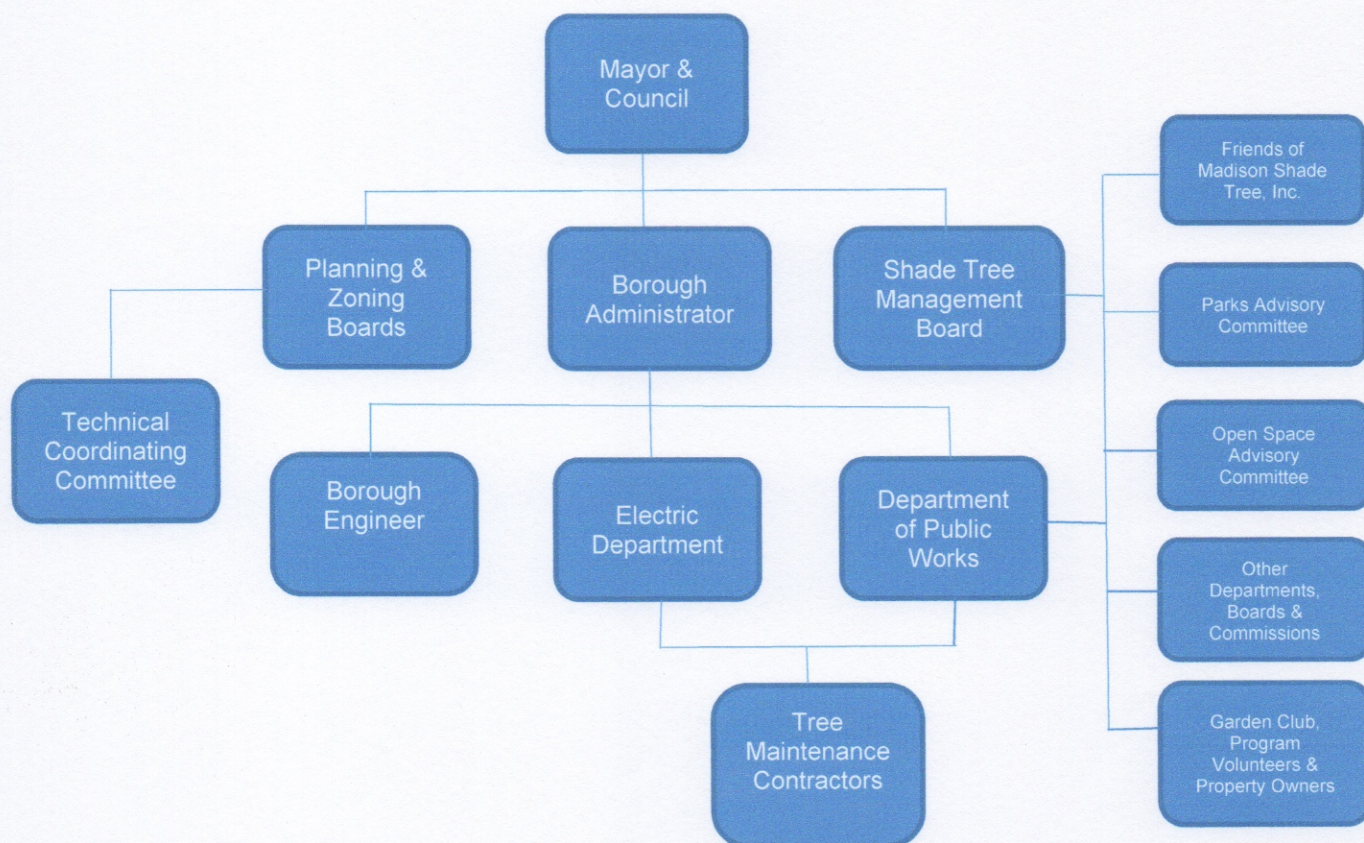
Borough Administrator

- The Borough Administrator serves as the chief administrative official of the Borough.
- Specifically, the Borough Administrator:
 - Implements the policies established by the governing body.
 - Manages the day-to-day operations of the Borough and assists the department heads with special projects.
 - Develops and prepares the budget with the Director of Finance.
 - Manages purchasing, personnel, insurance and grants.
 - Provides assistance to the Borough volunteer committees.

Shade Tree Management Board

- The Shade Tree Management Board is a group of volunteers who reside or work in Madison. The Board is comprised of seven regular and two alternate members.
- By ordinance, the Shade Tree Management Board is responsible for:
 - Exercising full and exclusive control over the selection, planting and care of public shade and ornamental trees and shrubbery, including the planting, trimming, spraying, care and protection thereof.
 - Controlling the use of the ground surrounding Borough trees, so far as may be necessary for their proper growth, care and protection.
 - Requiring the removal or pruning of any Borough trees, as necessary.
 - Developing and maintaining a Community Forestry Management Plan in compliance with the New Jersey Shade Tree & Community Forestry Assistance Act.
 - Providing guidance to the Director of Public Works regarding all matters pertaining to Borough trees.
 - Reviewing site plans before the Planning Board or Zoning Board of Adjustment and advising on tree related issues.
 - Determining the need for tree removal or pruning in conjunction with road reconstruction projects and notifying residents of associated tree removal plans.
 - Locating, identifying and selecting trees as "landmark trees."
 - Encouraging and advising the Borough on the proper care of trees, public and private.

Borough of Madison 4th Five Year CFMP



Planning Board & Zoning Board

- The responsibilities of the Boards follow the requirements of the Municipal Land Use Law NJSA 40:55D-1 et seq. and the Borough Land Use Legislation Ordinance Chapter 195-1 et seq.
- The Planning Board and Zoning Board are responsible, with the advice from the Shade Tree Management Board and Technical Coordinating Committee, for implementing various elements of the Borough Code and Borough Master Plan that relate to site development and tree protection and care of trees and other natural resources.

Parks Advisory Committee

- The Parks Advisory Committee advises the Mayor and Council on uses of the Borough's parks.
- The Parks Advisory Committee does some limited tree planting in Borough parks in cooperation with the Shade Tree Management Board and the Department of Public Works.

Borough Engineer

- The Borough Engineer is responsible for:
 - Working with the Shade Tree Management Board to review building, road and utility construction plans and their potential impact on Borough street trees.

Borough of Madison 4th Five Year CFMP

- Final review, coordination (STMB where appropriate) and approval of all site subdivision plans approved with conditions by the land use boards.
- Final review, coordination (with STMB where appropriate) and approval of all individual lot grading plans on single-family structures requiring a construction permit by the Building Department of the Borough of Madison.

Department of Public Works

- The Department of Public Works operates in cooperation with the Shade Tree Management Board and is responsible for:
 - Assisting in administering applicable regulations and policies relating to public trees.
 - Completing or supervising and assisting contractors in the completion of public tree pruning, removal and other maintenance tasks with the advice of and in cooperation with the Shade Tree Management Board.
 - Purchasing and planting new public trees and providing post-planting maintenance with the advice of and in cooperation with the Shade Tree Management Board.
 - Planting and maintaining trees in Borough parks in cooperation with Parks Advisory Committee and the Shade Tree Management Board.
 - Providing emergency response service, when appropriate.

Tree Maintenance Contractors

- Private contractors are routinely hired to complete work relating to the maintenance of public trees.
- Contractors are, within the terms of their agreements, responsible for:
 - Completing all work to the specifications of the Borough in an efficient and safe manner.
 - Following all current and accepted arboricultural standards and practices and abiding by all current and applicable safety standards relating to the tree care operations.
 - Reporting any tree-related hazards or other problems immediately to the Borough.

Madison Electric Department

- The Borough of Madison Electric Department is responsible for minimizing conflicts between trees and its facilities.
- While doing so, Electric Department crews and its contractors are responsible for:
 - Abiding by all applicable Borough ordinances, policies and procedures.
 - Exercising reasonable diligence in the installation and maintenance of its facilities to avoid damage to public and private trees.
 - Not removing any tree without prior approval of the Shade Tree Management Board or its private owner.
 - Following all current and accepted arboricultural standards and practices.
 - Assisting Department of Public Works personnel and contractors in completing tree removal and maintenance work around their facilities, where necessary.

Friends of Madison Shade Trees, Inc.

- The Friends of the Madison Shade Trees, a private, non-profit organization, is organized to support the Shade Tree Management Board. It offers volunteer services and resources to the Shade Tree Management Board.

Borough of Madison 4th Five Year CFMP

- The Friends accept monetary donations and apply for and receive grants to supplement shade tree planting projects coordinated with the Shade Tree Management Board.
- Friends of the Madison Shade Tree by-laws mandate that at least three of its members be current members of the Shade Tree Management Board.

Program Volunteers

- Many volunteer groups such as the Garden Club of Madison and the May Day Committee work with the Shade Tree Management Board in improving Madison's tree canopy.
- Most of these volunteers reside or work in Madison.

Open Space, Recreation and Historic Advisory Committee

- The Open Space, Recreation and Historic Preservation Advisory Committee was formed to make recommendations to the Mayor and the Council as to properties to be acquired or otherwise protected for:
- Open space preservation,
- Open natural resources preservation, including water supplies and
- Historic preservation.

Other Borough Departments, Boards and Commissions

- Other departments and boards may call upon the Shade Tree Management Board to assist the administering and implementing Borough ordinances, policies and procedures that relate to the protection and management of public and private trees.

Property Owners

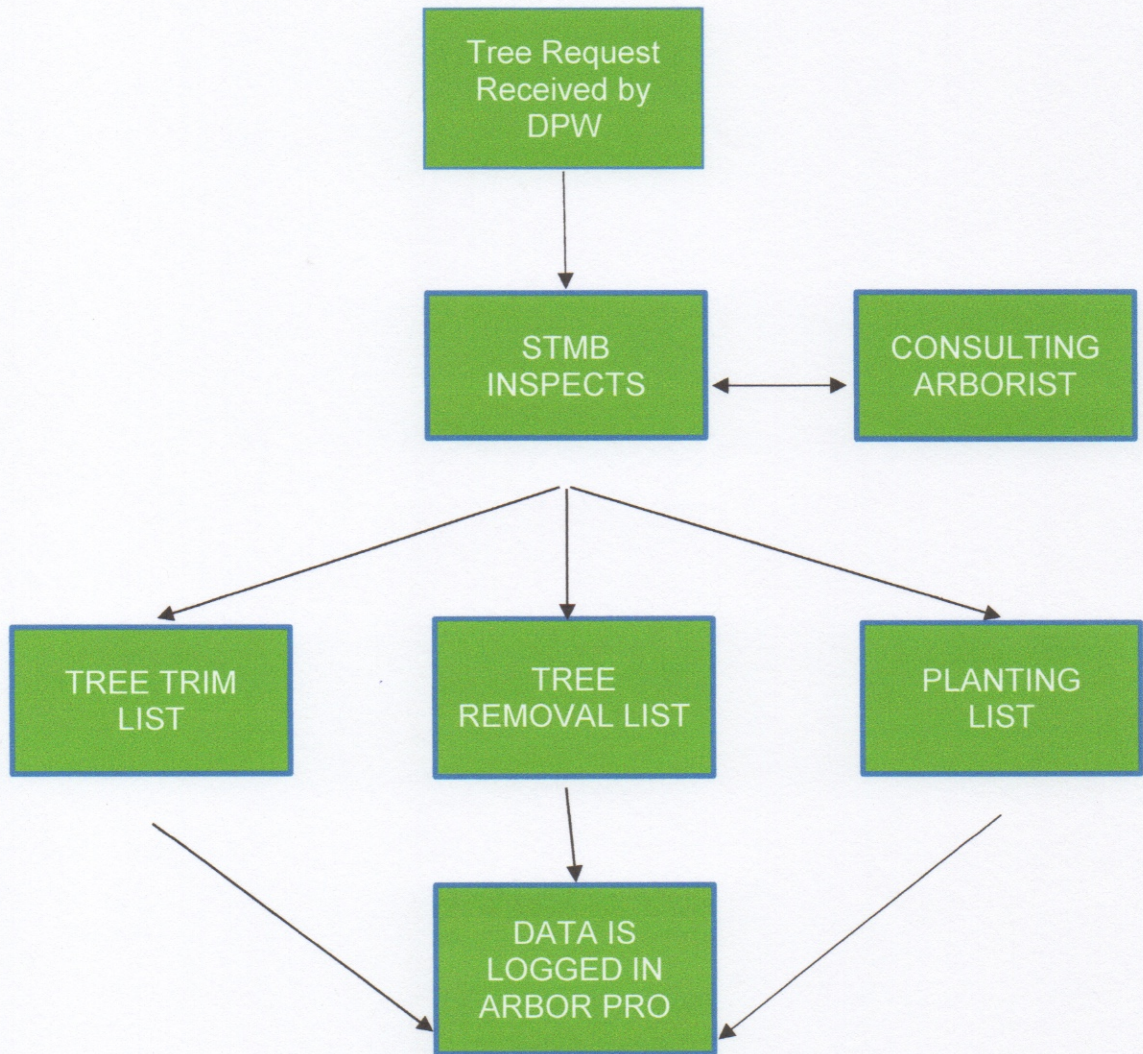
- Private property owners assist the Shade Tree Program to the extent that they:
- Notify the Borough of problems and service requests for public trees
- Assist in irrigating and protecting new public trees planted adjacent to their properties.
- Are encouraged to plant and properly care for trees on private property.
- Assist in identifying tree diseases and pests on private property that may threaten the entire community forest.
- Nominate Landmark Trees.

Work Flow Process

All tree inquiries/complaints/requests are received by the Department of Public Works. A Madison Shade Tree Management Board member investigates the issue. At that point, either it is referred to an arborist to assist in the decision or the address gets added to one of three lists. Those listing possibilities would be a tree trimming list, a tree removal list or a planting list.

After the said work is done, the status gets added to the ArborPro Data System.

WORK FLOW CHART



Master Plan

The Borough of Madison's Master Plan was last re-examined and adopted in 2011. That Plan is in synch with the goals and mission statement of the Shade Tree Management Board and that of this Community Forestry Management Plan. The Master Plan calls for Parks/Open Space and for Public Use/Public Land. In both of those categories, the Master Plan emphasizes the need for open space and for permanently preserved open spaces for conservation purposes. The goal in 2004 and 2011 hasn't changed. The goal was to "provide for additional parkland and preserve existing open space." The plan suggests gaining open space by preservation and acquisition.

Borough of Madison 4th Five Year CFMP

Future revisions of the Master Plan will incorporate additional goals specifically related to trees, their need and future planting. (CSIP # 11 Tree Planting).

5. Community Map

Borough maps have been included in previous submissions of the Community Forestry Management Plan.

6. Training Plan

The Borough of Madison is eager to continue its strive for excellence. Part of this is accomplished by the training of new volunteers and key personnel over the course of this 5-year plan (CSIP # 1 Training). The Borough intends to make use of the various programs available throughout the state as the primary education source. These include, but are not limited to, the New Jersey Shade Tree Federation's Annual Meeting, NJ Arborists Chapter of the International Society of Arboriculture's Meeting and Rutgers' Office of Continuing Education seminars.

Ongoing education will be sought on an as needed basis, with an emphasis on tree risk tree identification (CSIP # 6 Tree Hazard Assessment), tree planting specifications (CSIP # 11 Tree Planting) and continued research into tree/sidewalk conflicts (CSIP # 13 Sidewalk Maintenance Program).

Madison currently has one professional arborist and one on retainer on the Shade Tree Management Board. The Board has, and expects to use contract expert arboricultural services, on an as needed basis, to supplement their volunteer resources.

7. Public Education and Awareness

The STMB has a good relationship with the local newspapers. Articles are submitted by the STMB and printed in the local paper. There are times when an editorial is printed in support of the many active facets that the STMB is involved in. This can include, but not limited to Arbor Day Celebrations (CSIP # 4 Arbor Day Activities), tree giveaways, Tree City USA, Emerald ash borer information (CSIP # 9 Insect and Disease Management) and any other tree related issues, etc. The Borough Shade Tree Management Board continues to use this avenue to disseminate information to the public.

Another resource that has continues to be used is the municipal website (www.Rosenet.org). Tree information is routinely posted there and accessible to the public at this forum. Recent presentations are also posted and will be posted as a resource for the residents.

A new tree flyer was developed to be left with the property owners when a tree is planted in the Borough. This supplies the species and care instruction, with contact information for any additional information or questions that may arise. This type of municipal public

Borough of Madison 4th Five Year CFMP

information material proves invaluable to promote the Community's tree program and reaches many residents.

The Borough of Madison Shade Tree Management Board is fortunate to have many community resources available to assist promoting the goals of the Shade Tree Board to enhance the community and its residents (*CSIP # 3 Public Education and Awareness*). One of these activities is "Bottle Hill Day" which is held on the first Saturday in October. It is an annual town festival where business and community organization partake in meeting the community members and discussing topics. Additional community groups involved with the STMB are also the Friends of Madison Shade Trees, Inc., Inc, the Parks Advisory Committee, the Environmental Commission and the Garden Club of Madison. These three groups are a vital asset in promoting the tree program in the Borough.

The Green Fair is another opportunity that has and will continue to be used to promote the tree program in the Borough. Tables are staffed, and literature is disseminated. There are activities for children where seedlings can be planted. The Friends of Madison Shade Tree, Inc., the Parks Advisory Committee and the Garden Club of Madison also participate with the STMB in this annual event.

The municipal tree nursery officially began in 2013 and is going strong. It is maintained at the Community garden, and seedlings are added each year. New seedlings are planted, and seedlings are given away as they grow each year. There is a gardening library in the shed. Chestnut trees were started and transplanted into a Borough park.

The downtown business is also fortunate to have a display downtown, in a business window. In recent years, it has featured landmark trees, 'Big Trees of Madison' and the vital role that trees take on to offset the influence of building and other human activities. This has been a great format to present education and public relations information in a unique and creative way which is visible to countless of residents and visitors.

Additionally, the Arboretum was started in 2017. It was with the backing and support of the Mayor and Council, the Environmental Commission, the STMB, FMST, Parks and Open Space Committee.

8. Statement of Tree Budget

The shade tree expenses over the past two years are itemized in the chart below.

Categories	2016 Expenditures	2017 Budget
Tree Planting and Initial Care	16,500	18,000
Tree Maintenance	96,300	91,500
Management	4,850	8,150
Sub-Total	117,650	117,650
Utility Line Clearance	62,000	62,000
Total	179,650	179,650

Additionally, there have been 785 volunteer hours dedicated to the shade tree program. At the current volunteer rate of \$27.46, this equates to an additional \$21,556.10 in shade tree volunteer expenditures.

9. Statement of Plan Implementation

There are many proactive goals that have been established by the Shade Tree Management Board. Some of the goals are stretch goals, which keep the municipal shade tree program progressing to benefit the quality of the Borough's tree population, and its residents.

Listed below are the goals that are anticipated to be accomplished on a year by year basis.

Year 1, 2018:

- Develop Arboretum Master Plan with partners
- Continue young tree pruning program
- Continue windshield survey after major storms
- Establish pruning schedules based on inventory data and windshield surveys
- Install weed whacker guards on newly planted trees
- Enforce tree protection during construction
- Continue to publicize Emerald ash borer to residents
- Implement ash tree management program
 - Decide on which ash will be removed
 - Decide if any are to be treated, if any
 - Decide on replacement trees for ash population
- Monitor brush level in parks annually
- Continue 'annual' tree planting program, utilize partnerships where feasible
- Partner with Garden Club, Environmental Commissions and schools to disseminate recycling information on trees, grass, Christmas trees, and/or leaves
- Ensure Council liaison and/or other Council member/mayor has CORE Training
- Celebrate Arbor Day and apply for Tree City USA, Tree City USA Growth Award
- Write up the CFMP Annual Report

Year 2, 2019:

- Implement Phase I of Arboretum Plan
- Continue young tree pruning program
- Continue windshield survey after major storms
- Install weed whacker guards on newly planted trees
- Enforce tree protection during construction
- Continue to publicize Emerald ash borer to residents
- Remove ash trees in poor condition
- Treat healthy ash trees to manage budget/town resources
- Plant trees to replace the removed ash trees
- Monitor brush level in parks annually
- Continue 'annual' tree planting program, utilize partnerships where feasible
- Partner with Garden Club, Environmental Commission and schools to disseminate recycling information on trees, grass, Christmas trees, and/or leaves
- Conduct tree inventory sample in a park
- Ensure Electric Department Foreman has tree pruning training
- Celebrate Arbor Day and apply for Tree City USA, Tree City USA Growth Award
- Write up the CFMP Annual Report

Borough of Madison 4th Five Year CFMP

Year 3, 2020:

- Implement Phase II of Arboretum Plan
- Continue young tree pruning program
- Continue windshield survey after major storms
- Establish pruning schedules based on inventory data and windshield surveys
- Install weed whacker guards on newly planted trees
- Enforce tree protection during construction
- Continue to publicize Emerald ash borer to residents
- Remove ash trees in poor condition
- Treat healthy ash trees to manage budget/town resources
- Plant trees to replace the removed ash trees
- Monitor brush level in parks annually
- Continue 'annual' tree planting program, utilize partnerships where feasible
- Partner with Garden Club, Environmental Commissions and schools to disseminate recycling information on trees, grass, Christmas trees, and/or leaves
- Review tree ordinance
- Develop information packet for realtors and garden centers
- Celebrate Arbor Day and apply for Tree City USA, Tree City USA Growth Award
- Write up the CFMP Annual Report

Year 4, 2021:

- Implement Phase III of Arboretum Plan
- Continue young tree pruning program
- Continue windshield survey after major storms
- Install weed whacker guards on newly planted trees
- Enforce tree protection during construction
- Continue to publicize Emerald ash borer to residents
- Remove or treat ash trees
- Treat healthy ash trees to manage budget/town resources
- Plant trees to replace the removed ash trees
- Monitor brush level in parks annually
- Continue 'annual' tree planting program, utilize partnerships where feasible
- Partner with Garden Club, Environmental Commissions and schools to disseminate recycling information on trees, grass, Christmas trees, and/or leaves
- Conduct tree inventory sample in a park
- Celebrate Arbor Day and apply for Tree City USA, Tree City USA Growth Award
- Write up the CFMP Annual Report

Year 5, 2022:

- Implement Phase IV of Arboretum Plan
- Update Landmark Tree List
- Continue young tree pruning program
- Continue windshield survey after major storms
- Establish pruning schedules based on inventory data and windshield surveys
- Install weed whacker guards on newly planted trees
- Enforce tree protection during construction
- Continue to publicize Emerald ash borer to residents
- Plant trees to replace the removed ash trees
- Treat healthy ash trees to manage budget/ town resources
- Monitor brush level in parks annually
- Continue 'annual' tree planting program, utilize partnerships where feasible

- Partner with Garden Club, Environmental Commissions and schools to disseminate recycling information on trees, grass, Christmas trees, and/or leaves
- Celebrate Arbor Day and apply for Tree City USA, Tree City USA Growth Award
- Write up the CFMP Annual Report
- Write the next 5-year CFMP

10. Community Stewardship Incentive Program

CSIP # 1: Training

Training, page 17

CSIP # 2: Community Forestry Ordinance Establishment

Goals and Objectives, page 5

CSIP # 3: Public Education and Awareness

Community Overview, page 5

Community Overview, page 6

Public Education and Awareness, page 18

Goals and Objectives, page 5

CSIP # 4: Arbor Day Activities

Public Education/Awareness/Outreach, page 17

CSIP # 5: Tree Inventory

Community Overview, page 5

CSIP # 6: Hazard Tree Assessment

Training, page 17

CSIP # 7: Storm Damage Assessment

Goals & Objectives, page 4

Community Overview, page 5

CSIP # 8: Tree Maintenance and Removal

Goals & Objectives, page 4

CSIP # 9: Insect and Disease Management

Goals and Objectives, page 4

Public Education and Awareness, page 17

CSIP # 10: Wildfire Protection

Goals and Objectives, page 4

CSIP # 11: Tree Planting

Goals and Objectives, page 4

Community Overview, page 5

Community Overview, page 6

Community Overview, page 17

Training, page 17

- CSIP # 12: Tree Recycling
Goals & Objectives, page 4

- CSIP # 13: Sidewalk Maintenance Program
Goals and Objectives, page 4
Community Overview, page 5
Training, page 17

- CSIP # 14: Storm Water Management
Community Overview, page 11

- CSIP # 15: Sustainable New Jersey
Goals & Objectives, page 4