



May 25, 2021

Community Visioning

Caroline Ehrlich, Chief of Staff

Thomas Flynn, Floodplain & Resilience Manager

Township of Woodbridge, NJ

Mayor, John E. McCormac

Caroline.Ehrlich@twp.woodbridge.nj.us

Thomas.Flynn@twp.woodbridge.nj.us





Certification Criteria

Required	1
Priority	2
Points	150
Categories	6

2020 Woodbridge Metrics

Required	1/1
Priority	11/12
Total Points	1240/2005
Categories	18/18
Total Actions	103/147



Gold Star Standard in Energy

- *The Gold Star in Energy identifies the specific actions and levels of performance that municipalities can and must achieve for us to reach our goals for a sustainable New Jersey.*
 1. Decrease greenhouse gas emissions in time to avoid catastrophic climate impacts (minimize environmental harm).
 2. Increase the renewable energy fraction (decrease vulnerability of energy system).
 3. Increase affordability of energy.
 4. Increase resilience (decrease outages and vulnerability to disruptions).
 5. Decrease risk to human health from the energy system.

1. **Municipal Operations Standard:** Demonstrate reductions in GHG emissions from municipal operations and facilities at an average annual rate of 3.6% per year for 3 years (i.e., a rate amounting to 10.8% over 3 years or less).

2. **Community-wide Emissions Standard:** Take effective steps to bring down energy consumption, and thus emissions in the broader community, by implementing the following Sustainable Jersey actions at the specified Gold level of performance (or approved alternatives):

- a. Make Your Town Electric Vehicle Friendly
- b. Public Electric Vehicle Charging Infrastructure
- c. Make Your Town Solar Friendly
- d. Community-led Solar Initiatives
- e. Residential Energy Efficiency Outreach
- f. Commercial Energy Efficiency Outreach



****Sustainable Jersey (SJ)** will accept alternatives to one or more of the above actions. SJ will be rigorous in assessing proposed substitutes to ensure that, as a whole, the package of actions would result in at least 1% annual reduction in community-wide emissions



Sustainable Jersey Gold Star Standard in Energy Woodbridge Actions



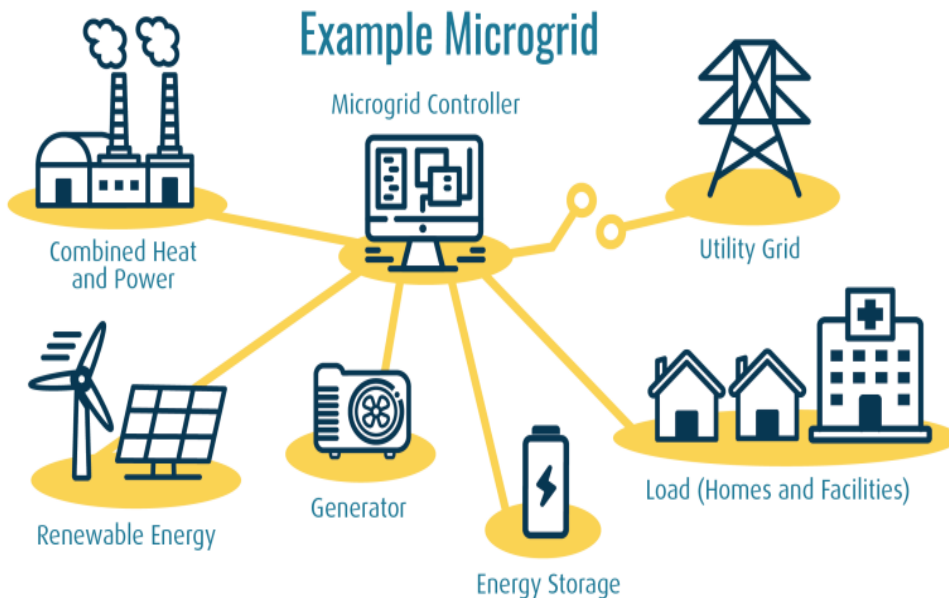
Municipal Operations: 13.6% reduction in overall energy usage over three years

Community-wide: Woodbridge achieved Gold Star standards for the following actions:

- Make Your Town Electric Vehicle Friendly
- Public Electric Vehicle Charging Infrastructure
- Make Your Town Solar Friendly
- Community-led Solar Initiatives
- Residential Energy Efficiency Outreach
- Renewable Government Energy Aggregation

2021 Energy Efficiency Goals & Projects:

- Electric Garbage Trucks and Shuttles
- Outside Lighting Energy Efficiency Upgrades
- Microgrid – Phase II Award
- Public Electric Vehicle Infrastructure Charging Stations



Volkswagen Mitigation Grant Project
(managed by the NJDEP Equipment
Modernization Program)

Amount awarded: **2,491,880**

3 Zero Emissions

Battery Electric Garbage Trucks

2 Zero Emissions

Electric Shuttle Buses



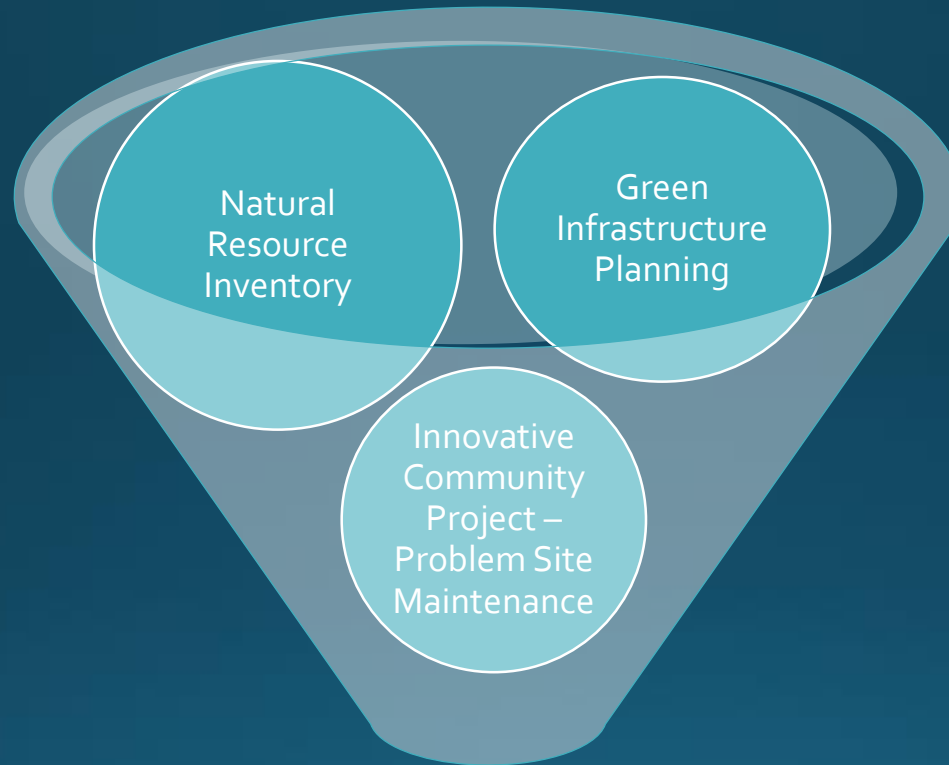
Gold Star Standard in Water

- *The Gold Star in Water contributes to meeting the requirements across several action categories including: Health & Wellness, Natural Resources, and Land Use & Transportation.*

Specifically, a municipality will need to be approved for:

- Two required actions: Natural Resource Inventory and Municipal Water Story including a Navigational Path (both actions are found in Natural Resource category).
- A third action selected by the municipality from a list of high impact actions - (the high impact water actions can be found in Health & Wellness and Land Use & Transportation categories). These actions often have different point values, and to count for Gold must be completed at the required tier.
- A fourth action can be selected by the municipality from a larger list of actions that advance water sustainability (these water actions can be found in Health & Wellness, Innovative Projects; Natural Resources and Land Use & Transportation categories).

Path to Gold Star Standard in Water



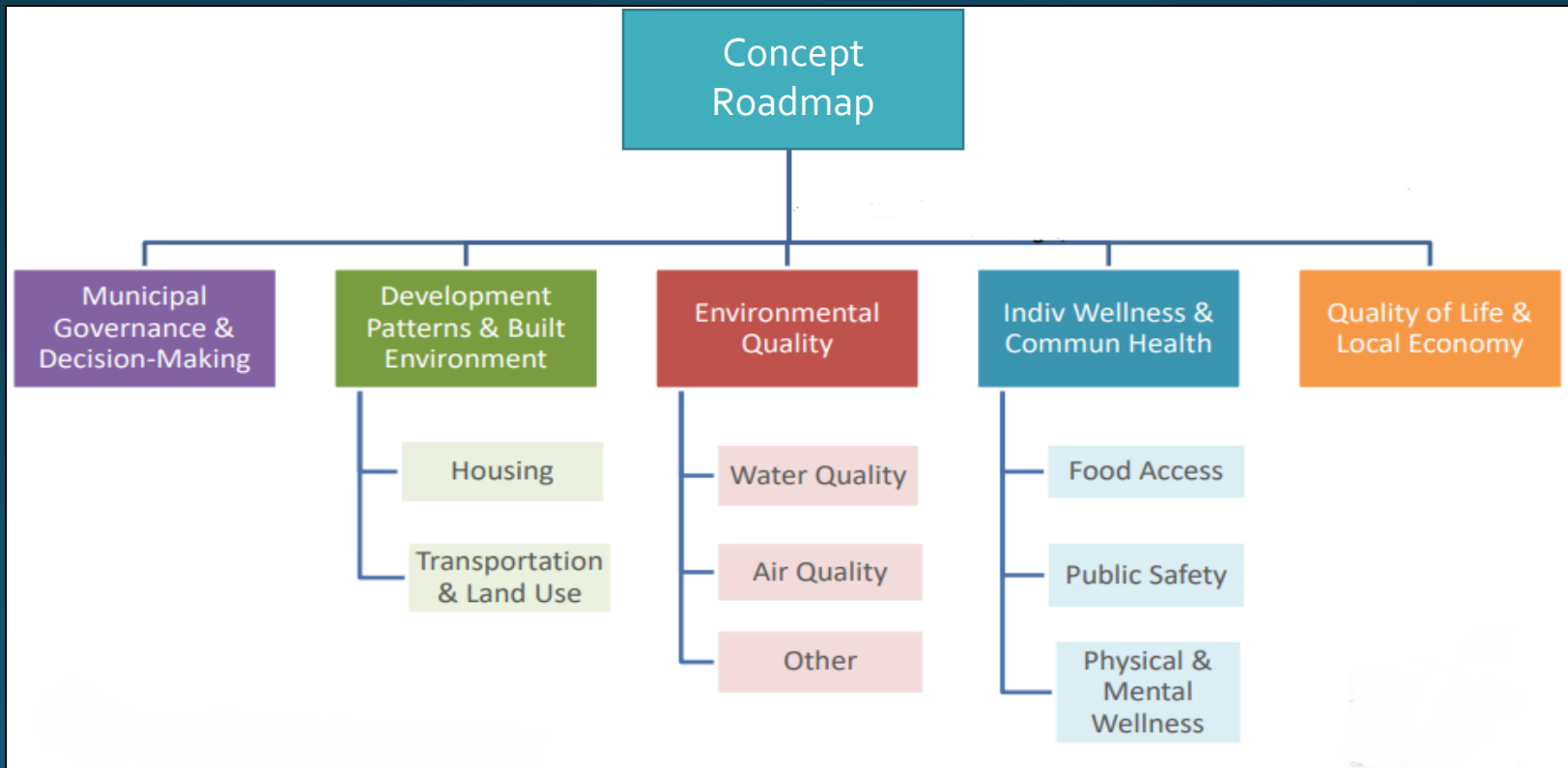
Water Gold Star





Gold Star Standard in Health ...Coming Soon!

- The Gold Star in Health will seek to build a culture of municipal decision making through a health lens, while collaborating with community stakeholders. The standards will also seek to institutionalize procedures and address 'upstream' health determinants by tackling the issues impacting public health, influence, and individual behavior.*



Woodbridge has pedaled to the forefront,
implementing initiatives that support
FREE bike sharing mobility!

*Inter-connected bikeable travel removes barriers to mobility and
increases the safety and comfort of pedestrians and cyclists,
broadens travel options for non-drivers, reduces automobile
traffic and increases recreational activity.*

Bike Routes Are Planned For All Ten Towns!

**MONTICALVO
& BAYSHORE**
Family of Companies



**DOWNLOAD THE APP
TO GET STARTED**

**MONTICALVO
& BAYSHORE**
Family of Companies

You need a smartphone to
use this bike share system.

To Check Out a Bike
1. Use the App to locate the bike station.
2. Press **Select a Bike**.
3. Enter the bike number and press **Rent Bike**.
4. Bike will electronically unlock from the rack.
5. Inspect bike prior to ride. Report any issues in App.

BIKES MUST BE RETURNED TO THIS LOCATION

To Return a Bike
1. Dock bike to the pin on the rack.
2. Ensure bike is securely locked to rack.
3. In the App, press **Active Rentals**.
4. Press **End Rental**.





- Station Village at Avenel – along with the Avenel Arts Center complex – stand on the long-abandoned 27-acre General Dynamics industrial complex in the Avenel section of Woodbridge Township.
- Station Village at Avenel and the Avenel Arts Center, in concert with the NJT North Jersey Coastline commuter train station serving Avenel, represents a \$50 million transit-related development project that created 500 luxury apartments and town homes, 25,000 square feet of arts-themed retail space, and a 10,000 square-foot performing arts center with artist studios, galleries, rehearsal and performance space, and themed restaurants and hospitality facilities.
- The Avenel Arts Village and Station Loft at Avenel include streetscape improvements, lighting, sidewalks, parks and green space.

Woodbridge Artisan Guild

- Media
- Photography
- Glasswork
- Sculpture
- Jewelry
- Pastel
- Oil & Acrylic Painting
- *All artwork is available for purchase*



Are you an artist?

**Do you know how we can
expand our artist community?**

Have ideas for new art installations?

**Help advance our
Creative Assets Survey!**

<https://www.twp.woodbridge.nj.us/548/Arts-in-Woodbridge>



The Mayor's Summer Concert series collects thousands of pounds of food for Township food pantries – a huge assist to the Township food pantries working to help families in need throughout the Summer.

MAYOR JOHN E. MCCORMAC

Golden Oldies Monday 7:30 PM

 June 21 Jesse Garon's Tribute to Elvis	 June 28 The Mahoney Brothers	 July 5 The Drifters	 July 12 Shirley Alston Reeves	 July 19 Johnny Maestro Tribute	 July 26 The Cameos
 August 2 The Coasters	 August 9 The Capris	 August 16 Shadows of the 60s	 August 23 Bobby Wilson's Tribute to Jackie Wilson	 August 30 The Infernos	

Tuesday Tributes 7:30PM

 June 29 Best of the Eagles	 August 3 Green River (Creedence Clearwater Revival)
 July 6 Real Diamond (Neil Diamond)	 August 10 Beatlemania Again
 July 13 Frontiers (Journey)	 August 17 The Blue Meanies (The Monkees)
 July 20 Starman (David Bowie)	 August 24 Forever Simon and Garfunkel
 July 27 Forever Ray (Ray Charles)	 August 31 Saints in the City (Bruce)

Woodbridge Wednesday 7:30PM

 June 23 Richard Thompson	 August 4 Screaming Orphans
 June 30 Tristan McIntosh	 August 11 The Sea The Sea & Bandits on The Run
 July 7 Raul Malo	 August 18 Savvy Brown
 July 14 Crystal Bowersox	 August 25 Honey Island Swamp Band
 July 21 Meta and the Cornerstones	 September 1 Willie Nile Band
 July 28 Nella	

2021 MAYOR'S SUMMER CONCERT SERIES

 **TOWNSHIP OF WOODBRIDGE**
CHARTERED 1988

All concerts are on the lawn at Woodbridge High School

MASKS ENCOURAGED

Food Donations Accepted

NO OUTSIDE FOOD OR DRINK PERMITTED

- The Mayor's Summer Concert Series Features classic Oldies & Doo-Wop, Rock n' Roll Tribute, Local Bands, Jazz and Country.
- Residents and neighbors bring their lawn chairs and enjoy the FREE concerts with family and friends.



CAN YOU MAKE A HOLE IN ONE?



Skyline Mini Golf at the Woodbridge Community Center boasts a challenging 18 hole water themed course with views of the New York City skyline. Water obstacles and uphill putting greens abound in this state of the art mini links. Our outdoor mini golf course promises hours of family fun. So come on down and spend some time with family and friends at Skyline Mini Golf!

WOODBIDGE BUY LOCAL



Your FREE APP is here!

Search **"Woodbridge Buy Local"** in the
App Store or Google Play Store



**BUSINESS DIRECTORY • LINKS • NEWS
EVENTS • VIDEOS • SOCIAL • PARKING**



"Buy Local" serves to ensure the success of local, small businesses by keeping dollars in our local economy...

"Buy Local" creates local jobs...

"Buy Local" reduces the Township's carbon footprint, vehicle emissions, and environmental pollution.

Woodbridge Cooperative

Cooperative Purchasing is a collaborative effort to obtain benefits in pricing, product quality and contract process efficiencies for public purchasing entities such as, Woodbridge Township.

- New bids will include language offering bidders to extend pricing to the Woodbridge Cooperative Purchasing Program.
- Identifying local vendors that may benefit
- Local Vendor Outreach & Fairs



What Are The Benefits Of The Cooperative Purchasing Program?

1. SOLICITATION PROCESS CONVENIENCE
2. QUALIFIED VENDORS AND PRODUCT FLEXIBILITY
3. COMMUNICATIONS UPDATES

Zuckerberg Institute Workshops

- Innovators participate in a process of becoming the future leaders of tomorrow.
- Begin with leadership and skills and habits that have helped entrepreneurs build billion-dollar companies and successful global initiatives.
- Move forward with own ideas through personal mentorship, and participate in prep courses.
- Take ownership in specific projects as they identify and address a need, collaborate to generate solutions, develop ideas, interact with leaders, and prepare presentations on the outcomes.



Michael Littig

Co-Founder, Zuckerberg Institute

Challenge folks to learn by doing by working hand in hand with local businesses, while being surrounded by highly motivated doers who want to enact change in their communities.

Nuisance flooding during high tides and strong coastal surges during storm seasons have been increasing in velocity, frequency, and intensity as a result of sea-level rise and climate change. Resilient infrastructure, such as, nature-based infrastructure is more readily able to rebound after powerful storm events... as recognized by the State of New Jersey Department of Environmental Protection, *living shorelines*, can be completely nature-based infrastructure (where appropriate) designed to attenuate wave action and attract wildlife.

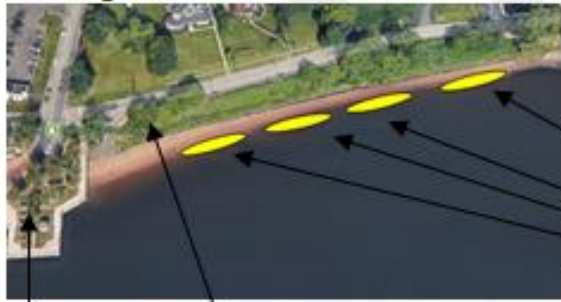


'Hard' infrastructure like retaining walls abruptly severs the ecological connection between the coast and water.



Not only do Living Shorelines defend land against destructive waves, but they also provide crucial habitat for fish and wildlife.

Example 1



Capt.
Carlsen
Pavilion
and boat
Launch

Cliff Rd.

Proposed Dune Habitat, Beach
Restoration, and break waters
(not to scale).

A proposed living shoreline through dune creation, beach restoration, and near shore break waters to attenuate wave energy along 200 – 300 linear feet of shoreline adjacent to Cliff Rd. in Sewaren, Woodbridge Township.

Said project seeks to ensure near-shore habitat enhancement for aquatic nursery environments and migratory birds.

Said project would provide erosion control and increase methodologies for creating more resilient coastlines.



Municipal Marina Enhancements

Situated adjacent to the Arthur Kill, we look forward to the expansion of the Township's marina and overall improvement to the adjacent newly Twp. owned parcels. The project will seek to:

- To stimulate economic investment in the area with the inclusion of a new restaurant
- To promote the effective use of properties for maritime and recreational use
- To provide for additional amenities and opportunities to residents and visitors
- To redevelop the degraded (formerly private) parcels into a vibrant maritime area
- To promote environmental stewardship, ecological uplift, & waterway access





Only Rain Goes Down the Storm Drain Campaign

In streams suspended solids can reduce visibility and absorb light, which can increase stream temperatures and reduce photosynthesis.



New sustainability sculpture installed at the Main Library Rain Garden. The sculpture is constructed out of recycled materials that would have otherwise ended up in a landfill....

So what Exactly Is Green Infrastructure, And How Does It Serve So Many Purposes?

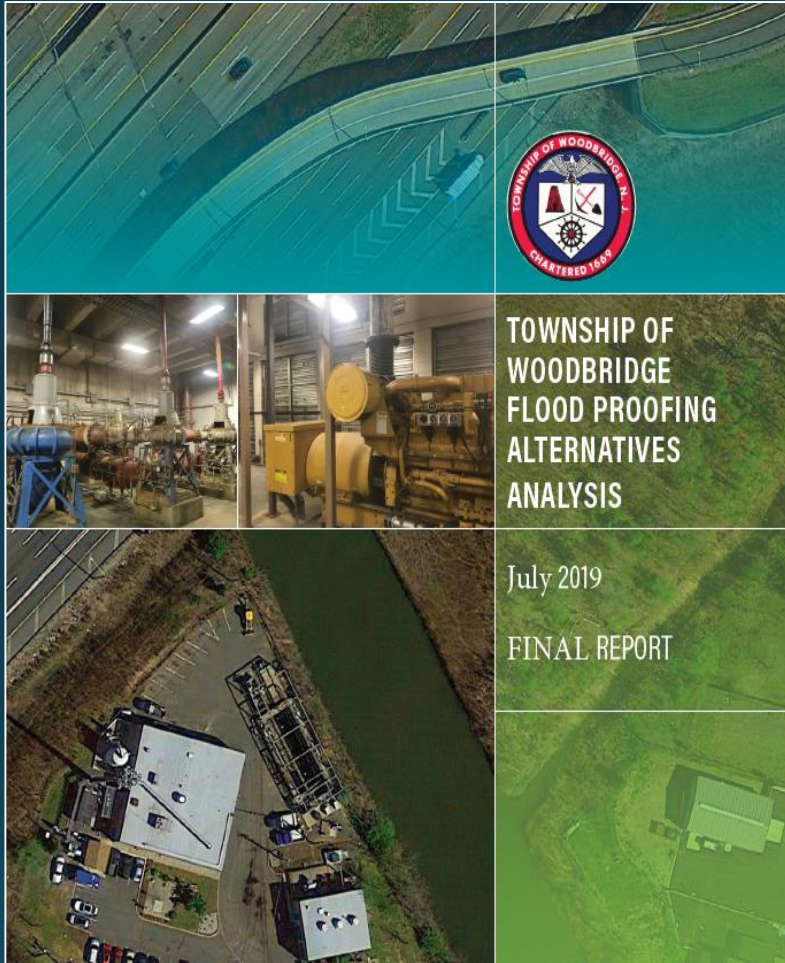


Green infrastructure such as, rain gardens and bioswales use plants found in the local ecosystem in conjunction with innovative engineering solutions to help capture and treat storm-water run-off before it enters our natural landscapes. Native flowers within these structures often attract pollinating insects like butterflies, and when strategically designed and implemented near libraries, and/ or in conjunction with walking paths, and educational signage, they become places of interest and learning opportunities within the community.

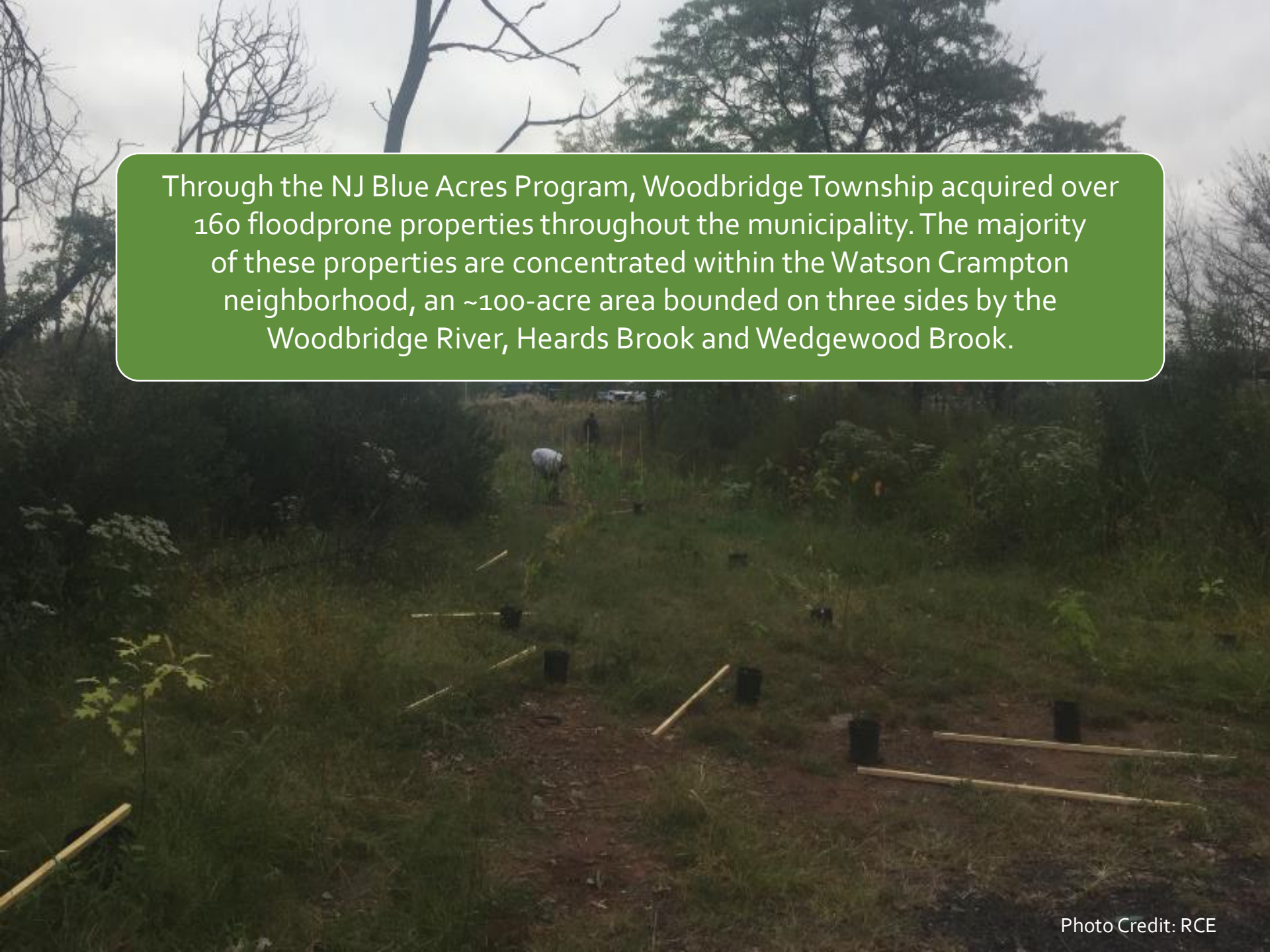
Two bioswales and two rain gardens are now uniquely embedded within the terrain adjacent to the Main Library's parking lot. These structures seek to capture and infiltrate 2,660 square feet of storm-water run-off from the parking area.



The Woodbridge Main Library's green infrastructure additions accounted for the 50th rain garden of the year for the Rutgers Cooperative Extension (RCE) team! We are proud to partner with the RCE in an effort to enhance water quality and our community's environmental integrity.



- Township owned and operated sanitary pump station located on Woodbridge Avenue is bounded east by the Woodbridge River and vulnerable to flooding events.
- Evaluating site level flood protection alternatives that will protect the buildings and equipment located on the pumping station site from the impacts of intense precipitation events and storm surge from the Woodbridge River are of utmost priority.
- The Township is actively pursuing a grant application to the Federal Emergency Management Agency (FEMA) in order to seek funding to complete mitigation actions which include active and passive mitigation efforts, as well as incorporating the use of techniques that are nature-based and reduce impacts from waves caused by coastal storms.

The background image shows a wooded area with tall trees and dense foliage. A green text box with rounded corners is superimposed on the upper half of the image. The text inside the box is white and describes the NJ Blue Acres Program. In the lower half of the image, there is a clearing with several black plastic pots and wooden stakes, suggesting a reforestation or landscaping project.

Through the NJ Blue Acres Program, Woodbridge Township acquired over 160 floodprone properties throughout the municipality. The majority of these properties are concentrated within the Watson Crampton neighborhood, an ~100-acre area bounded on three sides by the Woodbridge River, Heards Brook and Wedgewood Brook.



A Partnership Between Woodbridge Township and Rutgers University Cooperative Extension Water Resources Program

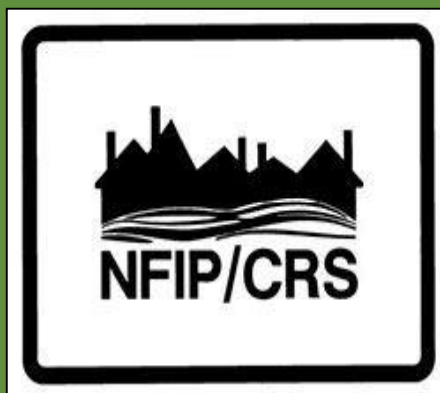




Photo Credit: Rutgers Cooperative Extension

Rutgers Cooperative Extension (RCE) developed a floodplain restoration plan for the area focusing on:

- 1) Protect safety and health of Township residents
- 2) Restore the natural function of the floodplain to promote storage
- 3) Enhance biodiversity



In order to participate in the Community Rating System (CRS) Program, a community must apply to FEMA and document its creditable improvements through site visits and assessments. FEMA estimated that only 7% of eligible NFIP communities participate in the CRS program.

The CRS Program, is intended to incentivize the reduction of flood risk, as well as the adoption of more effective measures to protect natural and beneficial floodplain functions. Woodbridge is a Class 5 CRS Community (25% reduction on flood insurance in Effective SFHA).

An enormous amount of resources and energy go into growing, processing, transporting, and eventually disposing of wasted food. That includes greenhouse gas emissions at every stage of the food system, plus water, fertilizer, and packaging.

Instead of a sad journey to the landfill, discarded organic material (uneaten food scraps and waste) are now deposited into specially-designed food waste containers for collection by the Township Department of Public Works Sanitation Division in specially-outfitted trucks. The food waste is transported to the Waste Management CORE Facility in Elizabeth, where it is processed and turned into energy that serves to reduce Green House Gas (GHG) emissions.



During regular operating hours all Woodbridge Township public schools now collect Food Waste.

Closing Thoughts



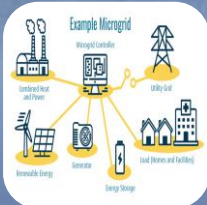
Exploring new approaches to solving old problems



Preserve, restore, & recreate



Filter & absorb storm-water



Energy efficient & readily able to rebound after storm events



Protect human life , property, and the environment

Questions?



May 25, 2021

Community Visioning

Caroline Ehrlich, Chief of Staff

Thomas Flynn, Floodplain & Resilience Manager

Township of Woodbridge, NJ

Mayor, John E. McCormac

Caroline.Ehrlich@twp.woodbridge.nj.us

Thomas.Flynn@twp.woodbridge.nj.us

