

acquisition in Howell Township are consistent with the core habitats and corridors identified as priorities for protection shown in **Figure 8.11** in the preceding chapter.

Howell Park was built as a county golf course on the site of an old dairy farm (Zink, 2010). Approximately 40% of the park's acreage was preserved as forest to help protect the Manasquan River Watershed and is currently used for passive recreation. Potential expansion of the park would also contribute to the development of the Manasquan River Greenway (Monmouth County Park System, 2019).

An interactive trail map App is available for Monmouth County parks (see **Internet Resources**).

9.2.4 State Open Space

Allaire State Park (**Figure 9.5**) occupies 3,080 acres in total. Just over half of the park (51%) is located in Howell Township, and the rest is in Wall Township. Historic Allaire Village, just east of the township line, was once known as the Howell Works and was a production site for pig and cast iron in the early 19th century. Much of the park remains in a natural state, protecting a section of the Manasquan River as well as native flora and fauna (NJDEP Parks and Forestry, 2019).

9.3 PRESERVED FARMLAND

The goal of Howell Township's farmland preservation program is "To preserve, to the maximum extent practical, Howell's agricultural industry and further enhance the promotion of farmland preservation within the township." Of the township's two-cent per \$100 assessed property value tax dedicated to fund farmland preservation, open space, and passive recreational projects, one cent is allocated for farmland preservation projects only (Monmouth County Planning Board and Birdsall Services Group, May 2011).

Based on the 2015 land use data, farmland accounts for about 7.2% of the total land in Howell Township, with a total of 2,838.25 acres actively farmed (see **Figure 2.4** and **Table 2.2** and **Table 9.2**). The types of farmland, as tracked by the NJ Division of Taxation (which is not the same as the land use types from the GIS coverage), are summarized in **Table 9.2** (NJ Division of Taxation, 2019).

1¢ of Howell Township's 2¢ Open Space, Recreational, Farmland and Historic Preservation Trust Fund tax is dedicated to farmland preservation.
(Monmouth County Planning Board and Birdsall Services Group, May 2011)



Farm on Merrick Road, 1969.

Photo credit: L. Doud



Farm on Merrick Road, 2020.

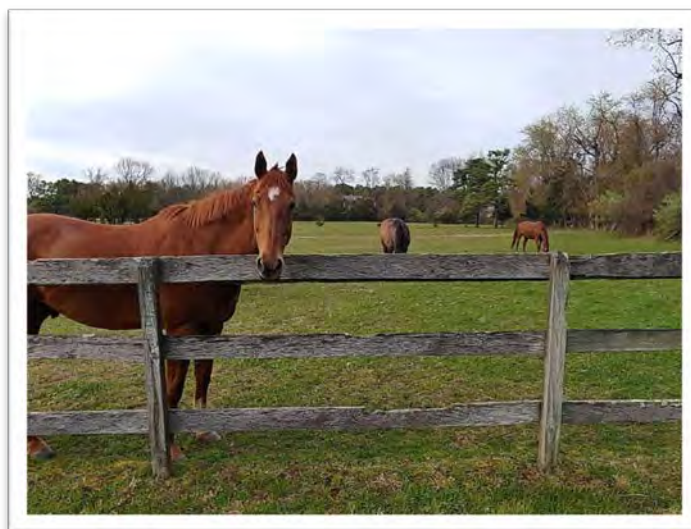
Photo credit: L. Doud

Twenty-two farms representing one quarter (25.8%) of the township's farmland has been preserved (**Table 9.3** and **Figure 9.6**). The 732 acres of preserved farmland accounts for 1.9% of the land in Howell.

Combined totals of preserved open space and farmland yield a collective 6,976.86 acres that have been protected in Howell, which is 17.8% of the land in the township. Plans for the preservation of additional lands in support of conservation objectives such as the creation of greenways to link existing open spaces and the protection of environmentally sensitive areas are outlined in the Parks, Recreation and Open Space element of Howell Township's Master Plan (CME Associates, 2017).

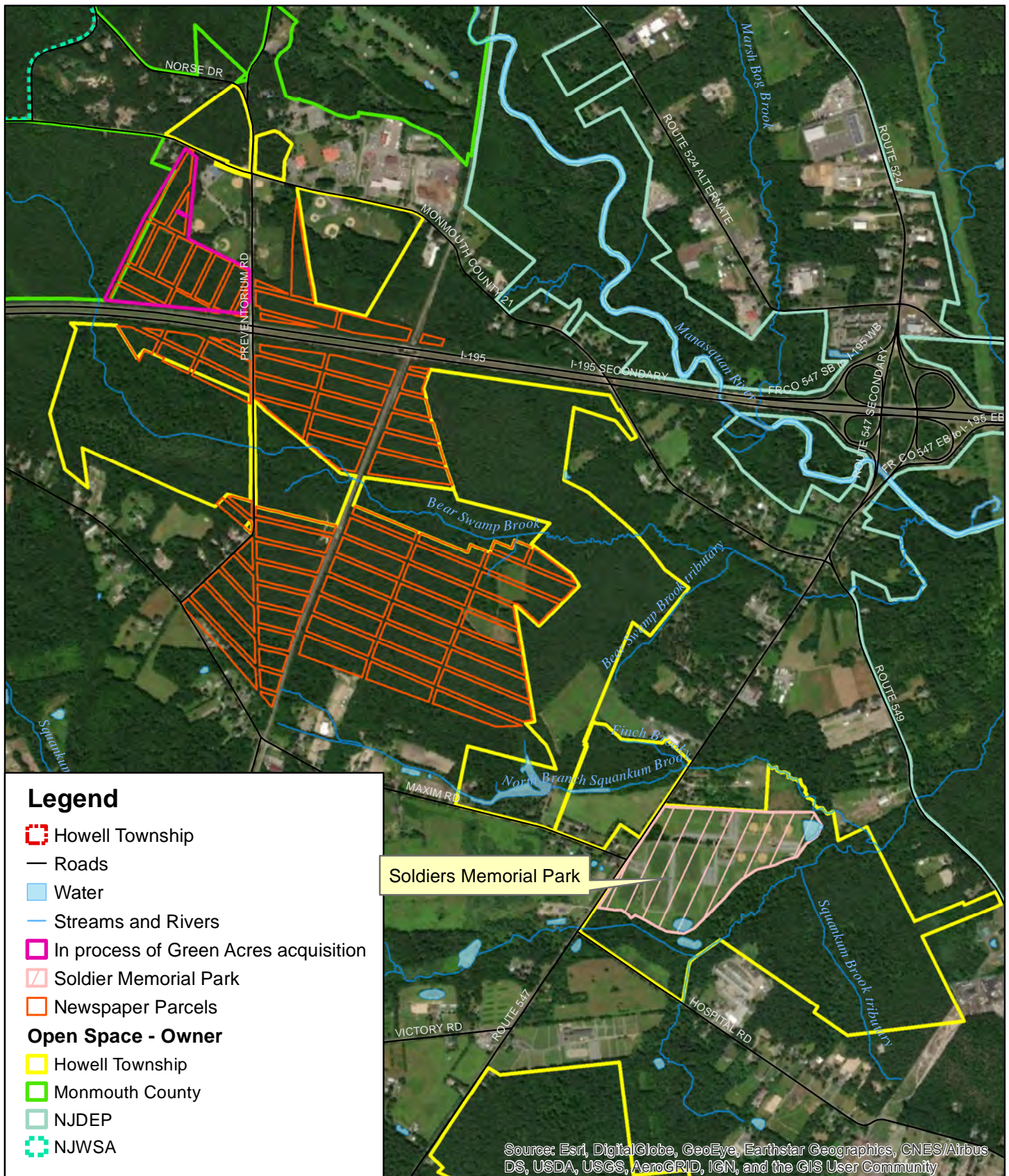
Table 9.2. Howell Township Farmland Data Report (2019)

Cropland Harvested	Cropland Pastured	Permanent Pasture
1,872 acres	259 acres	794 acres
Total Woodland Wetland	Horse Boarding-Rehabilitation and Training	Renewable Energy
2,447 acres	229 acres	42 acres
Total Land Devoted to Agricultural or Horticultural Use		5,643 acres
Source: NJ Division of Taxation, 2019		



Muddy Creek Farm, 2020.

Photo credit: J. Osborne



**Figure 9.2. Howell Township,
Bear Swamp Natural Area**

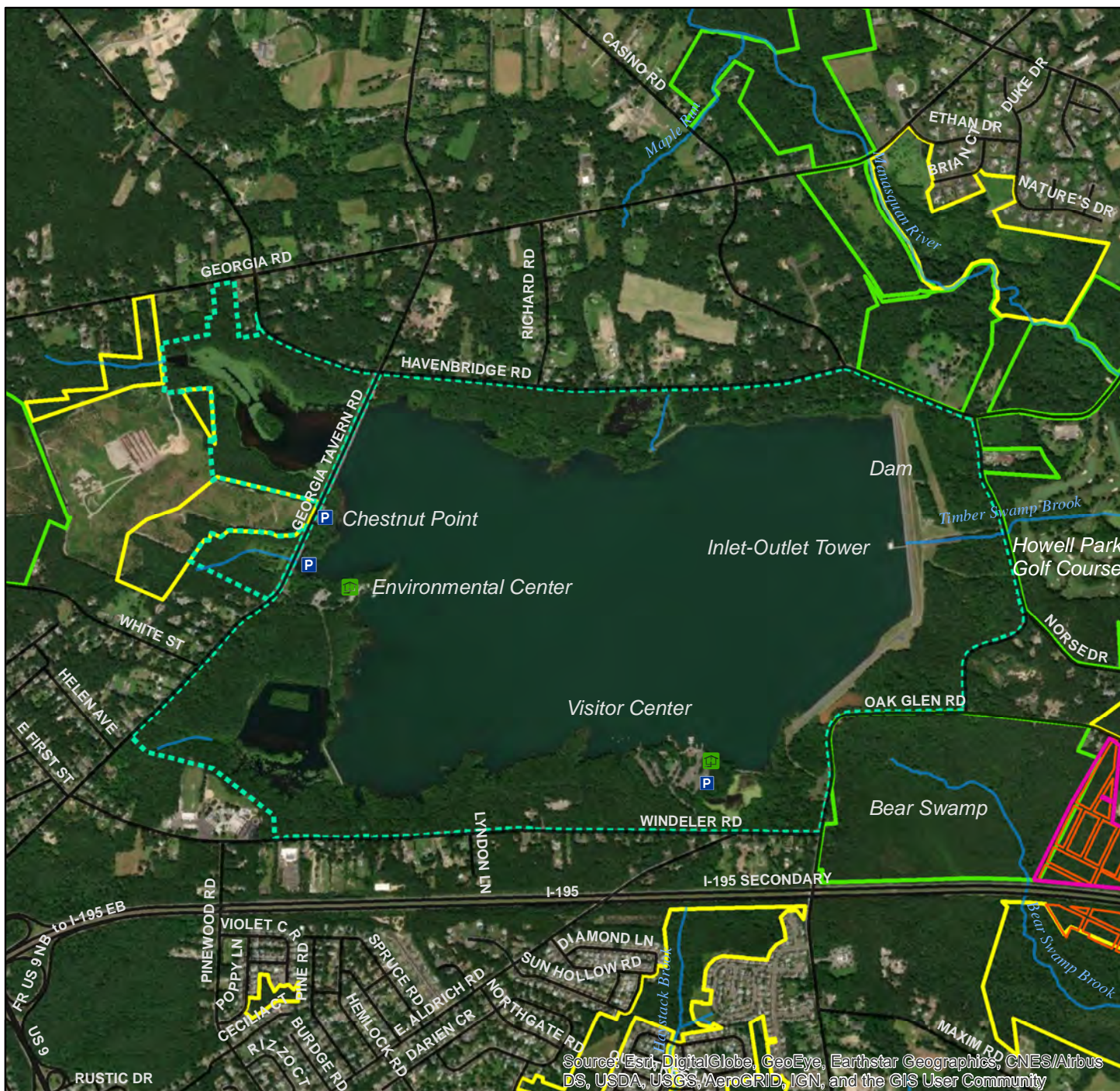
0 0.125 0.25 0.5 Miles

Data Sources: NJDEP, NJDOT
Disclaimer required for NJDEP Data: This map was developed using NJDEP GIS digital data, but this secondary product has not been verified by NJDEP and is not NJDEP authorized.



Kratzer Environmental Services
 Howell Township ERI

2020



Legend

— Roads

— Streams and Rivers

□ In process of Green Acres acquisition

□ Newspaper Parcels

Open Space - Owner

□ Howell Township

□ Monmouth County

□ NJDEP

□ NJWSA

The Monmouth County Parks website for the Manasquan Reservoir provides details, including hours and a map: <https://www.monmouthcountyparks.com/Page.aspx?ID=2531>

0 0.125 0.25 0.5 Miles

Data Sources: NJDEP, NJDOT
Disclaimer required for NJDEP Data: This map was developed using NJDEP GIS digital data, but this secondary product has not been verified by NJDEP and is not NJDEP authorized.



Kratzer Environmental Services
Howell Township ERI

2020

**Figure 9.3. Howell Township,
Open Space: Manasquan Reservoir**





Legend

- Roads
- Streams and Rivers
- Open Space - Owner
- Monmouth County



**Figure 9.4. Howell Township,
Open Space: Yellow Brook**

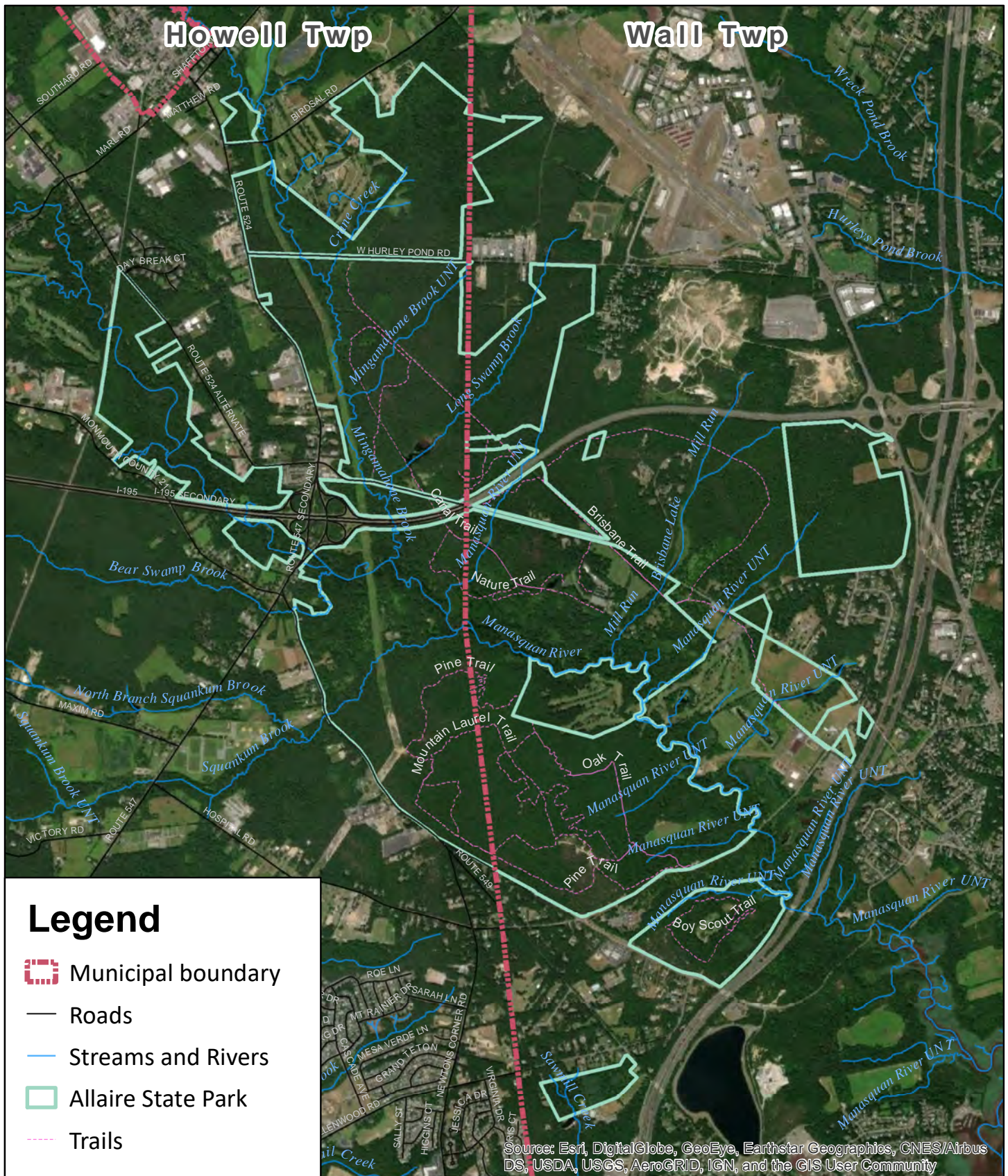
0 0.05 0.1 0.2 Miles

Data Sources: NJDEP, NJDOT
Disclaimer required for NJDEP Data: This map was developed using NJDEP GIS digital data, but this secondary product has not been verified by NJDEP and is not NJDEP authorized.



Kratzer Environmental Services
 Howell Township ERI

2020



**Figure 9.5. Howell Township,
Open Space: Allaire State Park**

0 0.2 0.4 0.8 Miles

Data Sources: NJDEP, NJDOT
Disclaimer required for NJDEP Data: This map was developed using NJDEP GIS digital data, but this secondary product has not been verified by NJDEP and is not NJDEP authorized.



Table 9.3: Preserved Farmland in Howell Township.

Date Preserved	Block	Lot	Acres	Total Parcel	Owner(s) at time of preservation
10/13/1987	164	17	53.34	68.75	Meade, David
	164	21	4.97		
	166	3	10.44		
9/17/2001	178	8	35.85	62.82	Keymer, Susan
	178	14	21.84		
	178	15	5.13		
6/27/2003	3	20	25.25	25.25	Borshowsky, Paul
11/17/2004	156	6	9.99	9.99	Marchese, Michael & Susan
12/22/2004	176	42.05	11.59	46.88	Brocklebank, Wayne & Louise
	183	31	35.29		
12/29/2004	176	41	7.81	16.09	Giambrone, Arthur & Mona
	176	42.02	8.28		
9/26/2005	170	30.03	7.83	18.66	Elsie & Donald Archbold
	171	10.01	10.83		
1/20/2006	175	23.04	11.59	11.59	Linney, John & Lissa
4/28/2006	151	8	8.96	8.96	George & Anita Casale
6/2/2006	224	14	5.55	5.55	Peacock, Donald & Georginia
7/6/2006	224	33	11.14	11.14	Costigan, John/Crombie, Elizabeth
4/16/2007	135	9.03	6.09	26.96	Shapiro, Drew (Sunset Stables)
	135	9.04	6.05		
	135	9.05	6.08		
	135	9.06	8.74		
5/18/2007	138	30.01	26.49	43.93	John Cuddihy Jr.
	138	49	17.44		
6/29/2007	151	18	42.47	42.47	Plum Tree Holdings LLC (Dee K. Lee)
7/19/2007	42	59.01	9.01	9.01	Mark Shaffery & Doreen Schottman
9/26/2007	154	5.02	10.22	10.22	Fred & Jeann Aker/Phyllis Mazza
10/29/2007	138	30	15.65	15.65	Terpack, Mary: Estate of
11/16/2007	164	7.05	31.56	35.38	Okerson, Charles H
	164	13.01	3.82		
1/4/2008	42	6	96.39	147.94	Tullo Vaccaro Farm (T & T Realty)
	42	15	5.73		
	42	17	9.31		
	42	22	7.62		
	42	31	17.82		
	42	37	11.07		
1/13/2012	154	11	26.51	26.51	Clayton, Thomas & Emily/Monmouth C
5/25/2016	164	8.01	4.13	67.95	John D. Thompson, Sr. Family Limited
	164	15.01	45.00		
	164	16	9.61		
	168	38	9.21		
3/23/2018	151	12.02	19.78	20.62	Feigus, Brad & Barbara
	151	12.02	0.84		
Total Acres of Preserved Farmland				732.32	
* Preserved tracts include additional acreage in neighboring municipality (Freehold).					
Note: Acreage calculated by GIS may vary from deed acreage.					
Sources: NJDA SADC, July 20, 2018; NJDA SADC, January 29, 2020					

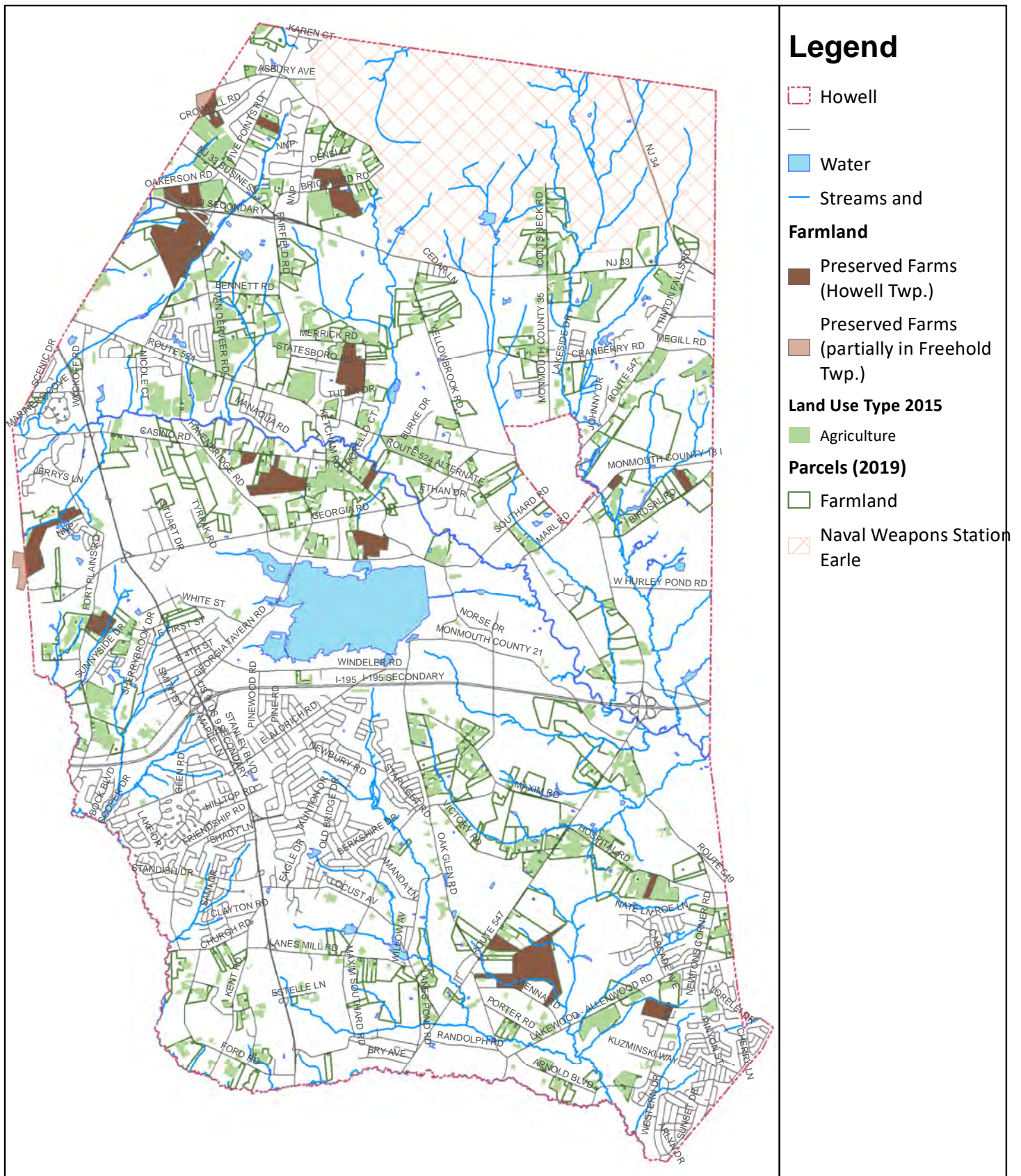


Figure 9.6. Howell Township, Farmland

0 0.5 1 2 Miles

Data Sources: NJDEP, NJDOT
Disclaimer required for NJDEP Data: This map was developed using NJDEP GIS digital data, but this secondary product has not been verified by NJDEP and is not NJDEP authorized.



Kratzer Environmental Services
 Howell Township ERI

2020

REFERENCES: OPEN SPACE

ANJEC (Association of New Jersey Environmental Commissions). 2011. Resource Paper: Open Space Plan. 12 pages. <https://anjec.org/wp-content/uploads/2019/07/OpenSpacePlan2011.pdf>

CME Associates. 2017. Parks, Recreation and Open Space Master Plan Element. Report prepared for the Township of Howell, adopted October 19, 2017. 67 pages. <https://www.twp.howell.nj.us/ArchiveCenter/ViewFile/Item/401>

Delaware Valley Regional Planning Commission (DVRPC). November 2008. Environmental Resource Inventory of the Conservation Element of the Howell Township Master Plan.

Howe, Linda. 1989. Keeping our Garden State Green: A Local Government Guide for Greenway and Open Space Planning. Association of New Jersey Environmental Commissions. 57 pages.

Howell Township Budget Archives. 2019. Adopted Budgets: 2003-2019. Accessed January 30, 2020. <https://www.twp.howell.nj.us/Archive.aspx?AMID=53>

Howell Township Tax Collector. 2019. Five Year Tax Rate History. Accessed January 30, 2020. <https://www.twp.howell.nj.us/DocumentCenter/View/1035/Five-Year-Tax-Rate-History-Per-100-Assessed-Value?bidId=>

Lake Restoration and Wildlife Management Committee. January 2012a. Bear Swamp Natural Resource Inventory. Resolution approved February 14, 2012 Matter of Amendment to Land Use Element of the Municipal Master Plan (Bear Swamp Natural Area and Resource Inventory). <https://www.twp.howell.nj.us/Archive.aspx?ADID=391>

Lake Restoration and Wildlife Management Committee. January 2012b. Master Plan for the Bear Swamp Natural Area Howell Township, New Jersey. Resolution approved February 14, 2012 Matter of Amendment to Land Use Element of the Municipal Master Plan (Bear Swamp Natural Area and Resource Inventory). <https://www.twp.howell.nj.us/Archive.aspx?ADID=392>

Meggitt, Jane. 2004. Residents honored for land preservation work. Available from the Central Jersey Archives for April 29, 2004. <https://archive.centraljersey.com/2004/04/29/residents-honored-for-land-preservation-work-4/>

Monmouth County Park System. September 5, 2017. Monmouth County Open Space Trust Fund Fact Sheet. https://co.monmouth.nj.us/documents/127/Fact_Sheet_Open_Space_Trust_Fund_revised_9_5_2017.pdf

Monmouth County Park System. 2019. Monmouth County Open Space Plan 2019. Adopted October 7, 2019. 182 pages. https://co.monmouth.nj.us/documents/132/Monmouth_County_Open_Space_Plan_Final_Draft_with_Public_Comments_09_18_19.pdf

Monmouth County Planning Board and Birdsall Services Group. May 2011. Comprehensive Farmland Preservation Plan of Howell Township Monmouth County, New Jersey. <https://www.twp.howell.nj.us/Archive.aspx?ADID=389>

National Park Service. 1995. Economic Impacts of Protecting Rivers, Trails, and Greenway Corridors: A Resource Book. Fourth Edition. 154 pages. <https://www.railtotrails.org/resource-library/resources/economic-impacts-of-protecting-rivers-trails-and-greenway-corridors-a-resource-book/>

NJ Conservation Foundation. 2012. Garden State Greenways. <http://www.gardenstategreenways.org>

NJ Department of Agriculture (NJDA), State Agriculture Development Committee (SADC). July 20, 2018. New Jersey Farmland Preservation Program (njfpp). GIS Data. <http://www.nj.gov/agriculture/sadc/farmpreserve/resources/njfpp.zip>

NJ Department of Agriculture, State Agriculture Development Committee (NJDA SADC). January 29, 2020. New Jersey Farmland Preservation Program Permanently Preserved Farmland by County. <https://www.nj.gov/agriculture/sadc/farmpreserve/progress/stats/preservedfarmslist.pdf>. Accessed February 10, 2020.

NJ Division of Taxation. 2019. 2019 Farmland Data Report. Statistical Data - Farmland/FEC. <https://www.state.nj.us/treasury/taxation/pdf/lpt/2019farmland.pdf>

NJDEP. September 17, 2019. State, Local and Nonprofit Open Space of New Jersey, Edition 20190917 (Land owner_openspace). GIS Data. <https://njgis-newjersey.opendata.arcgis.com/datasets/njdep::state-local-and-nonprofit-open-space-of-new-jersey>

NJDEP, Bureau of GIS. 2020. NJ-GeoWeb 3.0. <https://nj.gov/dep/gis/geoweb splash.htm>. Accessed January 30, 2020.

NJDEP, Division of Parks and Forestry. 2019. Allaire State Park. Site updated January 24, 2019. <https://www.state.nj.us/dep/parksandforests/parks/allaire.html>

Trust for Public Land and Land Trust Alliance. 2004. Land Vote 2003: Americans Invest in Open Space.
https://www.tpl.org/sites/default/files/cloud.tpl.org/pubs/confir_landvote_2003.pdf

Zink, Clifford W. 2010. The Monmouth County Park System: The First Fifty Years. Friends of the Monmouth County Park System, Lincroft, New Jersey. 176 pages.

INTERNET RESOURCES: OPEN SPACE

Allaire State Park: <https://www.state.nj.us/dep/parksandforests/parks/allaire.html>

Association of New Jersey Environmental Commissions: <http://anjec.org>

Garden State Greenways: <http://www.gardenstategreenways.org>

Monmouth County Parks: <https://www.monmouthcountyparks.com/>

Trails Web Map: <http://mcps.maps.arcgis.com/apps/Viewer/index.html?appid=29e4c94fe4de4c16b6bde3fcc3d355cd#!>

Trails phone app (instructions): https://co.monmouth.nj.us/documents/130/lost_in_parks_app_instructions_updated_2_12_2018.pdf

Native Plant Society of New Jersey: <http://www.npsnj.org>

New Jersey Conservation Blueprint: <https://www.njmap2.com/blueprint/>

New Jersey Green Acres Program: <http://www.nj.gov/dep/greenacres/index.html>

New Jersey Natural Lands Trust: <https://www.nj.gov/dep/njnl/>

NJDEP Green Acres Program: https://www.nj.gov/dep/greenacres/pdf/osrpg_2019.pdf

Rain Garden Manual: http://www.npsnj.org/pages/nativeplants_Rain_Gardens.html

Rutgers NJ Agricultural Experiment Station – information for farmers, gardeners, & consumers: <http://njaes.rutgers.edu/>



Winston Park tree planting. Photo credit: K. Diaz